



NOTES ON THE ANNUAL GENERAL MEETING

THURSDAY 8 JULY 2021, 13.00 HRS

Held by Teams

OVERVIEW OF THE YEAR

In order to improve the timeliness of the meeting, brief verbal reports will be given at the General Meeting. The following notes are designed to accompany the Annual General Meeting.

AGENDA ITEM No 4: THE PRESIDENT'S REPORT

Foster and support future development of Academic Pathology

A key focus of the Society is to increase the number of pathologists in academic posts and the quality and status of academic pathology in the UK. We have adopted a strategic approach in collaboration with the Jean Shanks Foundation to address the above focus of the Society and the mission of The Jean Shanks Foundation. To achieve our goal £5m of funding shared between these two Charities, over five years, has been committed to the new opportunities involving the education and exposure of medical students, Foundation doctors, pathology trainees and early career scientists to pathology-based research. The Pathology Grand Rounds were initiated for the purpose of educating and inspiring pathologists and the wider clinical and non-clinical research community about the value of pathological and tissue-based research.

The undergraduate engagement programme, under the management of Dr Abhik Mukherjee (Chair, Education Sub-committee) and Dr Gemma Petts (Lead for Undergraduate Activities), continues to be promoted and supported.

This programme seeks to broaden the base of our recruitment into pathology and focus on attracting the brightest and best from medical schools. The undergraduate strategy includes a formal Undergraduate sub-committee chaired by Amber Matkowski, Manchester. The sub-committee organises a range of undergraduate activities throughout the year and at our meetings. This programme is linked to the College and two taster meetings are normally held each year: one is organised by the College in the South of England which we part fund and the second is a standalone meeting for Histopathology run by the Society outside of London. This year's event scheduled for April was cancelled due to the lockdown imposed as a result of the Covid-19 pandemic. We have previously run these in Leeds and Manchester. These have been successful as measured by the feedback. The programmes and feedback are on the [website](#). If your centre wishes to run one of these please contact Gemma Petts.

We continue to promote [The ambassador programme](#) which seeks to co-ordinate the undergraduate initiatives across the country and give bright young people experience of pathology in the workplace. We hope that with a greater knowledge of the opportunities that a career in pathology provides, will attract some of the most able doctors to pursue careers in pathology. This initiative is managed by the Education Sub-committee Chair.

Jean Shanks & Pathological Society (JSPS) Partnership for Developing Academic Pathologists

Joint funding of £5m in the first instance was committed for academic training of pathologists. This initiative was started in 2018 and was set to run for 5 years but has been extended due to the impact of Covid-19.

Funding is available for the following schemes

See Appendix A.

A number of new schemes have been introduced.

New JSPS Studentships were introduced in 2020 for Year 1 & Year 2 medical students to carry out a research project in pathology during vacation periods for a maximum of £1,000 per student for up to 50 students per year. Applications are submitted by the supervisor. 9 awards were made in the first round, the 2nd round in July 2020 was deferred due to the Covid-19 pandemic, many of which have now been taken up.

JSPS Clinical Research Training Fellowships.

The other schemes are now attracting good candidates (see report under Research Committee).

The Pathology Grand Rounds



A special thank you to the Trustees of the Jean Shanks Foundation for their continued support, and to Gareth Thomas for Chairing the Research Sub-committee.

[The National Academic Trainee Network](#) co-funded by the Jean Shanks Pathological Society Partnership

The programme aims to educate young academics in the different career paths open to them and how best to place themselves to be successful academics. We have held nine meetings at various sites including Leeds, London, Nottingham, Edinburgh, Belfast, Maastricht, Cambridge, Dublin and Harrogate. There were 2 virtual meetings held in 2020 with the next (virtual) one is planned for 5 July 2021.

Attendance and feedback have been excellent, with around 20-30 attendees at each meeting. The programmes and feedback are on the [website](#) and I am indebted to our colleagues for the efforts they have made to create this internationally competitive cohort of young people who will be our future. We hope to continue the international component of these meetings to broaden the UK academic trainees' experiences.

Prof Phil Quirke continues to be involved with this programme.

Lobbying for enhanced academic training. We continue to work with the RCPATH to recognise the need for curriculum and culture change in cellular pathology training to future proof our discipline.

The trainees are especially important to the Society and I am very encouraged by the increasing numbers of trainee members and their direct participation in our activities. I thank Dr Kate Marks, Leeds, for her leadership of the Trainees' Sub-committee.

Links with other professional bodies

We continue to work closely with the BDIAP. At our meetings of the Officers of the Society and the BDIAP, we have discussed greater cooperation and collaboration. Many of our members are members of the BDIAP and vice versa. There is a joint desire to work together and with the RCPATH to improve the research, training and professional environment for pathologists in the UK and for those overseas members and affiliates who look to the UK for guidance.

We also work closely with the CRUK through the jointly funded CRUK/Path Soc Predoctoral Research Bursary scheme.

ACCEA

The Society continues to offer its assistance to Members as allowed by the ACCEA. Due to the Covid-19 pandemic, the ACCEA was postponed from the 2020 Round to March 2021 and the Society has supported applications received from members. It is very hard to obtain these awards. Please remember that you have to score well in all areas if you are going to reach the highest levels. Thus, research and education at all levels must be undertaken by those who aspire to these awards.

I would recommend that those submitting applications prepare these well in advance and ask a colleague to read them. It is important to focus on the impact of your efforts; being on a committee is not sufficient.

2020 Committee Awayday – this was cancelled due to the Covid-19 pandemic.

The Committee continue to follow the strategy agreed, with our main focus being as follows.

It was disappointing not to be able to hold our Away Day at which the following issues would have been discussed.

- Develop effective strategies to support and develop academic pathology.
- Greater engagement with other learned Societies.
- Greater engagement with undergraduate medical students with continued support of the co-sponsored Summer School with the RCPATH and the BDIAP as well as expanding the initiative to a second meeting in the north. These were cancelled this year due to the COVID-19 pandemic.
- Promotion of the role of molecular pathology at research and service levels, particularly amongst trainee pathologists.
- Maintain a strong portfolio of research support at grant and meeting levels.
- Develop an educational strategy to expand support at undergraduate, postgraduate and CPD levels.



- Continue our engagement with the Japanese Pathological Society and to concentrate on building engagement with European pathologists and societies.
- Remain an effective Society by implementing modern communication platforms for engaging with members and developing educational programmes.

Journal of Pathology

Our journal maintains its leading position as the highest-ranking monthly pathology research journal and I would like to thank Simon Herrington, Richard Poulosom, the Editorial Board and referees for continuing to take the journal forward in a highly competitive commercial market. A full update on the Journal can be found on pages 13-17.

Journal of Pathology: Clinical Research

This is the companion Journal to the Journal of Pathology; it has a more clinical focus and is open access and on-line only. Under the Editorship of Simon Herrington and his colleagues, the journal has PubMed and Web of Science listing and we are pleased to announce that it has achieved an Impact Factor of 3.489. We continue to have great hopes for this sister Journal which meets a need in the market for translational research and, as a fully Open Access title, provides the Society with a vehicle to support publishing in pathology through the current challenges in academic publishing. A full update on this Journal can be found on pages 18-20.

Meetings

We are pleased to continue the annual Joint Meetings with the British Division of the IAP (BDIAP) creating a mutually beneficial engagement to bring all Pathologists together in one annual meeting, the next will be Manchester Pathology 2021, 6-8 July, and will be a fully virtual event. The winter meetings will continue following the successful 3rd Joint Meeting with the Royal Society of Medicine in London in January 2020 – the next meeting planned event is the 4th Joint Winter Meeting on 25-26 January 2022 which we are planning to run as a hybrid style event. I would like to thank Latch Ilyas and Abhik Mukherjee in Nottingham for agreeing to organise a programme for the meeting together with the Trainee & Undergraduate teams. Bi-annual meetings are essential to the future of academic pathology not only to sustain our momentum but to stay at the forefront of academic research. We will continue to engage with the Japanese Pathological Society and they will be represented at the Manchester Pathology 2021 event.

Retirements

I will retire this year as President and will be succeeded by Prof Mark Arends having been elected at the 2020 AGM.

New Committee Members

We are fortunate to have Dr Ali Khurram on the Committee as the newly appointed Webmaster & Digital Adviser. Ali's help and input have been invaluable in managing the Society's digital presence and developing a new website. We also welcome Dr Vivienne Parry as Lay Representative on the Committee following Sue Armstrong's retirement after her many years of excellent service on the Committee.

Thank you

Running the Society is a team effort, but I would particularly like to thank our administrative staff Ros Pitts and Julie Johnstone, who have experienced challenging times over the last 5 years, having had to move office several times before our permanent move to the new College building in April 2019. We should not underestimate the time and effort that this has taken by our loyal staff. Indeed, I suspect that many of us hardly noticed what was going on in the background as the Society continued to be organised as efficiently as ever. This is a great reflection on Ros and Julie.

I am also grateful to the Officers and committee members and also everybody who has given up their time to help the Pathological Society move forward over the year. The future is exciting, but we are at a critical time if we are to sustain and grow the great academic traditions of UK and Irish academic pathology.

Adrienne M Flanagan, June 2021



AGENDA ITEM No 5: GENERAL SECRETARY'S REPORT

5.1 Society Lectures, Medals and Awards

Members are referred to the General Secretary's notices in the Agenda document for deadlines for nomination/application for this year's lectures, medals and awards.

5.2 Membership

Total membership has decreased slightly from last year to 2021 (2253 at September 2020). This is partly a reflection of changes in the number of Undergraduate members (more leaving than joining) during the COVID-19 pandemic in 2020 and the first part of 2021, that was associated with a lack of undergraduate activities. The membership data reflect good numbers of concessionary members converting to Ordinary membership when they move into career grade posts. It is predicted that after the Covid-19 pandemic related restrictions taper with a return to previous Society activities, there may be some growth in Undergraduate Associate Membership and Foundation Associate Membership in the future.

5.3 Undergraduate Involvement/ Undergraduate Associate Membership

The Undergraduate network is now fully embedded in the Society's mission. Amber Matkowski is Chair of the Undergraduate Sub-committee and attends the FGP and Committee Meetings.

Since the introduction of Undergraduate Associate Membership in 2015, the Society now has 426 Undergraduate members. Students need to be members of the Society in order to apply for the Undergraduate Bursary, Intercalated Degree grant and any other grant schemes as appropriate. Undergraduate Associate Membership is free of charge.

Due to the pandemic there were no Undergraduate meetings in 2020. There will be an Undergraduate Day at the forthcoming Manchester Pathology 2021 Virtual Conference from 6-8 July 2021.

The Society is very grateful to Dr Gemma Petts for agreeing to act as the Lead for Undergraduate activities for the Society in February 2020, and she monitors and engages with all Undergraduate activities.

5.4 Foundation Associate Membership

Foundation Associate Membership was introduced in 2018/19 and we currently have 83 Foundation Associate members. Undergraduate Associate membership converts to Foundation Associate membership upon completion of a medical degree. Foundation Associate Membership is free of charge. Undergraduate Associate members are asked to contact the Society Administrator around the time of completion of a medical degree to confirm this change in membership status.

5.5 Special Resolution to amend Articles 22, 23 & new Article 33.

To allow virtual/electronic general Society meetings (including Annual General Meetings) to be held as necessary, the Committee proposes that the Articles are amended to permit this – these changes are denoted in the attached copy of the Articles and affect the following clauses:

Articles 22 and 23 (page 13).

Article 33 is a new /additional clause and subsequent clauses have been renumbered accordingly (pages 16-17).

The governance of the Society remains unaltered with Officer and Sub-committee remits being unchanged.

5.6 Website Strategy

The content of the Society's website is currently under review and a new website will be launched shortly. This will also include a new membership management database system. The Society appointed Dr Ali Khurram, University of Sheffield, as Webmaster & Digital Adviser in September 2020. The Society is very appreciative of the hard work and input which Ali has provided for the new website and other electronic innovations. Members will be asked to check their details (held in the new system) are correct and to comment or offer feedback on the new website in due course. For any questions relating to the website please contact admin@pathsoc.org.



5.7 Other Matters

The Pathology Grand Rounds are a monthly series of online lectures by invited speakers that started in January 2021 as a new way of providing virtual Pathology seminars / research presentations to Society members (and it is open to others), as an initiative driven forward by Society President Professor Adrienne Flanagan and co-sponsored by the Jean Shanks Foundation. A Pathology Grand Rounds Executive Group has been set up to organise the programme of talks. We have already had several excellent speakers and there are several more similarly impressive speakers lined up for the rest of the year.

Mark Arends, June 2021

AGENDA ITEM No. 6 – THE TREASURER’S REPORT

The Society remains in a satisfactory financial state in 2020 despite the COVID-19 pandemic. The Society is reporting a small surplus of income over expenditure of £19,443 (2019 surplus of £586,933) There has been a decrease in the value of the Society’s investment Portfolio and an associated decrease in investment income which reflects performance of the financial markets and the economy in 2020. The summary position as detailed in the accounts is as follows:

Income has decreased for the year under review to £1,168,755 (2019: £1,369,508) primarily due to a decrease in income from all the listed investments and a lack of meetings and events. Subscription income is relatively stable at £86,857 (2019: £83,232), but on its own this income would not enable the Society to function. The main areas of expenditure continue to be charitable grants £616,207 (2019: £861,662), Society meetings £157,006 (2019: £467,322) and support costs of the society £270,246 (2019: £288,318). Overall income has exceeded expenditure by £19,443 (2019 £586,935) after realised and unrealised investment gains and losses. Fund balances total £8,338,027 (2019: 8,318,584).

We carry forward £8.33m, the majority of which is invested in a diversified portfolio managed by our financial advisors, Cazenove, the charities division of Schroders. The Trustees receive an annual presentation from Cazenove, which includes a comparison with their peer group to ensure performance is broadly in line with expectations. The level of investments in the portfolio has continued to allow the Society to commit to the major five year investment jointly with the Jean Shanks Foundation to support a series of research schemes to facilitate trainees in pathology to develop their academic and research careers. These range from early career support through to support for late stage trainees applying for independent investigator awards. These grants offer two application deadlines annually. The Society has supported funded extensions to individuals whose research is supported by the Society and was disrupted either by University research laboratories being closed because of COVID-19 regulation or being redeployed to support the NHS.

Our main source of income remains the Journal of Pathology which contributed £860,340 to the Society budget. We continue to be indebted to Editor-in-Chief, Simon Herrington, his Senior and Associate Editors and the production team at Wiley. The Society gratefully acknowledges all their hard work. The Journal is crucial to the success of the Society. The ongoing development and progress of open access academic publishing represents an increasing threat to income from The Journal of Pathology. For comparison the Journal of Pathology Clinical Research which is fully open access contributed £21,747 to Society income.

Under the leadership of the President, the Society continues to be able to support its strategic development to increase interaction with trainees in academic pathology posts and also with undergraduate medical students.

Graeme Murray, June 2021

AGENDA ITEM No. 7 – MEETINGS SECRETARY’S REPORT

2021 Joint Winter Meeting with the Royal Society of Medicine was cancelled due to the COVID-19 Pandemic

2021 Winter School – Feedback attached as Appendix B.

Manchester Pathology 2021, Virtual Conference

This 13th Joint meeting with the BDIAP has been challenging and our thanks go to the team in Manchester for stepping in to organise the programme. Conference Partners International (CPI) were appointed to manage the whole Conference and we hope this will prove to be a successful, enjoyable and well attended event for our first virtual joint meeting.



- Abstracts submitted: 179
- Total number of delegates to date 480 including invited speakers from 4 countries
- Delegate breakdown:

BDIAP/Path Soc Path Soc Members	103
BDIAP/Path Soc Path Soc Concessionary Members	95
Path Soc Undergraduate/Foundation Doctor Members	53
Non Members (Consultant or equivalent)	53
Non Mem Concessionary/Undergraduate/Foundation Doctor	52
Invited Speakers/Session Chairs/Poster Chairs	124
- Japanese Society of Pathology Guests will include Prof Shinobu Masuda and two junior/trainee representatives, Dr Kenji Ohshima and Dr Kazuhiro Yamanoi
- Currently there are 7 sponsors

2021 Virtual/Digital Winter School, February

127 delegates attended and the Virtual Winter School.

Future Meetings

2022

25-26 January	4 th Joint Winter Meeting with the RSM, London – Currently planned for hybrid (On-Line and Face to Face)
February	Winter School (dates/format to be confirmed)

Heike I. Grabsch, June 2021

AGENDA ITEM 8.1 EDUCATION SUB-COMMITTEE REPORT

EDUCATION SUB-COMMITTEE REPORT

The Education subcommittee conducts all activity by teleconference. The Sub-committee meets twice a year to discuss Education grant funding and any other matters of relevance to education of the Society members. Minutes of these meetings are available from the Society office. An overview of the Education Sub-committee activity for 2020 is detailed below:

Education Grant Scheme Budget

Undergraduate elective bursary and prize

The undergraduate bursary deadline dates were 27 February and 28 April in 2020. 17 applications were received of which 12 were funded. Of the 12 funded and due to the Covid-19 pandemic only 4 electives were completed. The 8 remaining electives have been deferred but it is uncertain as to whether they will go ahead in 2021. This represented a total spend of £9750.00 for 2020 – please note that the majority of this budget has not been spent.

Each recipient of a bursary is required to submit a report. In 2017, due to major differences in the types of reports received it was decided to award two bursary report prizes, one for the best undergraduate research report and one for the best undergraduate clinical report.

The best undergraduate research report was awarded to Andreas Economou, University of Cambridge, 'Developing a new artificial intelligence-based diagnostic approach to ulcerative colitis and Crohn's disease' No clinical report was awarded.

Undergraduate Essay Competition

This essay prize is offered annually, and the winner is invited to receive the £500 prize at the Society Winter meeting the following year. Precious Jolugbo, University of Leeds was the winner of the 2020 essay prize entitled 'A clinical pathologist on every paper- the importance of pathologists in translational medical research'. Due to the Covid-19 pandemic the presentation of the £500.00 will not take place, the prize money has been paid directly to Precious Jolugbo. The winning essay from 2020 can be found on the Society website.



The title of the 2021 prize essay is: **“How does understanding pathology help anticipate future healthcare requirements”**.

Intercalated BSc

3 applications were received from students from 2 medical schools: 2 from the University of Bristol & 1 from the University of Cambridge. All 3 applications were funded. Due to the Covid-19 pandemic it was agreed to introduce a second intercalated BSc deadline date, 01 October. 1 application from Imperial College, London was received. This represents a total spend of £60 000.00 for 2020.

It is emphasised that each student receiving a Society award would be expected to submit their work, either as an oral presentation or poster, at the Winter meeting following completion of their degree. Supervisors would be politely reminded to encourage their students to do this.

Student Society Bursary Scheme

No applications were received in 2020.

Education Grant scheme

There were no Education Grant applications in 2020

Path Soc Winter School

The Winter School ran under the leadership of Catherine Horsfield and Alison Winstanley for the ninth time. Due to the Covid-19 pandemic the winter school was a fully virtual school.

127 delegates attended the on-line Winter School, of these 1 was from the Czech Republic, 1 was from Sweden, 10 were from Ireland, and the remaining 115 were from the United Kingdom. The first virtual Winter school was a resounding success with most delegates preferring the fully virtual model.

Golden Microscope Award

Introduced in 2018 with a 1st March 2019 deadline this award provides recognition for excellent post-graduate training in pathology. No nominations were received for 2020.

Objectives for 2021-22

Definite objectives for the Education Subcommittee are more difficult to set than ever given the COVID-19 situation, so our prime aim for the next year is to maintain the trajectories of our existing aims. The Education Subcommittee has already instituted a policy of flexibility in respect of student funding, and many decisions about variations to individual projects have been made and will continue to be required.

We expect to continue the effort to raise the profile of teaching within the Pathological Society; this will be achieved through dedicated sessions at meetings and also, we will explore other round the year activities. In view of the re-formatting of teaching/teaching resources across the country that pathology trainers, trainees and undergraduates have had to innovate/adjust to in the COVID/post-Covid era, the subcommittee will look into how digital resources may revolutionise such educational activities. The Educational subcommittee will explore developing new resources to aid in training and new teaching and learning techniques for remote learning.

Contacts established with the Medical Schools Council Assessment Alliance have enabled high-quality multiple-choice questions (MCQs) on histopathology to be developed over the previous years and entered into a national question bank, including questions suitable for inclusion in the finals examinations of all medical schools. Contribution to this question bank is still encouraged.

The Pathology Ambassador scheme continues; participants will be encouraged to re-engage in a time of serious uncertainty for students, and their decisions about career plans are made in the context of distorted educational opportunities, at both undergraduate and postgraduate levels. The presentation materials circulated to Ambassadors have been updated, to help them bring the benefits of PathSoc to the attention of students, and to support them to become contact points for students considering a career in pathology.



The subcommittee continues its tradition of humbly acknowledging the contribution of illustrious pathology education pioneers, and we are proud to have organised the Paola Domizio Prize for Best Undergraduate Abstract submitted at a Society/Joint Meeting in memory of Dr Paola Domizio. This is being launched in 2021.

Abhik Mukherjee, June 2021

AGENDA ITEM 8.2 REPORT OF RESEARCH SUB-COMMITTEE

The Research Sub-committee is responsible for promoting and supporting the research aims of the Society. The Sub-committee meets twice a year, by teleconference, to discuss research grant funding and any other matters of relevance to the research aims of the Society. Minutes of these meetings are available from the Society office. An overview of the Research Sub-committee activity for 2020 is detailed below. The Society thanks *The Jean Shanks Foundation* and *Cancer Research UK* for their continued support of our jointly funded schemes.

PathSoc Research Grant Schemes

Small Grants Scheme (Deadline dates - 1 April and 1 October)

The small grants scheme has four streams: Trainees Small Grant, Consultants' Pump Priming Small Grant, Post-Doctoral Collaborative Small Grant & the Trainee's Collaborative Small Grant.

16 applications were received (3 Consultants' Pump Priming Small Grant, 1 Post-Doctoral Collaborative Small Grant & 11 Trainee Small Grants) of which 7 were funded (1 Consultants' Pump Priming Small Grant & 6 Trainee Small Grants).

A total spend of £69,959.53

PhD Studentships Scheme (Deadline date 1 October)

A total of 7 applications were received in 2020. 3 PhD's were awarded to

Dr M Jansen, UCL (*Clonal Diversity of Gastric Cancer Precursors for Tailored Risk Prediction*)

Prof CS Herrington, University of Edinburgh (*Molecular dissection of synchronous ovarian and endometrial endometrioid carcinoma*)

Prof RW Taylor, Newcastle University (*Investigating the molecular consequences of impaired macroautophagy on the development of ataxia*)

A total spend of £315,000.00

International Collaborative Awards Scheme (Deadline date 1 October)

6 applications were received of which 3 were funded from:

Prof M Du, University of Cambridge (*Salivary gland MALT lymphoma: mutation profiling to unravel oncogenic mechanism*)

Dr O Giger, University of Cambridge (*Multimodal morphometric characterisation of a novel colorectal cancer subset*)

Dr N West, University of Leeds (*Clarification and classification of tumour deposits in colorectal cancer*)

A total spend of £30,000.00

Equipment Awards Scheme (Deadline dates 1 April and 1 October)

A total of 10 applications were received in 2020 of which 7 were funded:

Dr D Bury, Blackpool Victoria Hospital (*Purchase of ATR-FTIR microscope*)

Dr V Srirangam Nadhamuni, Barts Cancer Institute (*Purchase of Codex Processing Computer, Custom Build*)

Dr S De Noon, UCL (*Purchase of a Precision 7920 workstation (Dell UK) customised*)

Dr H Crane, University of Sheffield (*Qubit Flex Fluorometer*)

Dr DJ Elliot, Newcastle University (*QIAXcel Advanced, PrioPLUS System (inc. software)*)

Dr E Soilleux, Cambridge University (*Part funding of a TapeStation*)

Dr J Gregory, University of Edinburgh (*Basescope Start up Set (oven & reagent kits)*)

A total spend of £58,943.64

Visiting Fellowships Scheme (Deadline dates 1 April and 1 October)

1 application was received & funded in 2020

Dr A Irvine, St James's Hospital, Leeds (*Acquiring the methods required to train deep learning networks to predict clinically important features from histology*)

A total spend of £1278.27



Early Career Pathology Research Grants – Hodgkin & Leishman grants (Deadline dates 1 April and 1 October)

1 application was received in 2020 which was not funded

Cuthbert Dukes Award (Deadline date 1 April)

No applications were received in 2020

Trainee Research Awards (Deadline date 01 October)

Best Trainee Research Impact Award

No applications were received in 2020

Best Trainee Research Paper Award

No applications were received in 2020

The Jean Shanks Foundation/Pathological Society (JSPS) Joint Research Grants (Deadline dates 1 April and 1 October)

Two rounds of interviews were held this year (January 2020, June 2020) for the higher value schemes (Clinical PhD Fellowship, Clinical Lecturer Grant, Intermediate Research Fellowship, Clinical Academic Research Partnership Grant)

JSPS Pre-Doctoral Research Bursary

A total of 6 applications were received in 2020. 4 applications were funded

Dr C Parker, UCL (*Analyses of Tumour Infiltrating Lymphocytes in lethal Prostate Cancer: a biomarker analysis in the multi-centre STAMPEDE clinical trial*)

Dr C Ross, UCL (*Large-scale deep learning for automated diagnosis of Barrett's dysplasia*)

Dr A Willsher, University Hospital Southampton (*Regulation of inhibitory receptor expression in clear cell Renal Cell Carcinoma (ccRCC)*)

Dr M Nimir, University Hospital Coventry & Warwickshire (*Prediction of Microsatellite Instability and Recurrence from Histology in Colorectal Cancer Using Deep Learning*)

A total spend of £153,177.63

JSPS Clinical PhD Fellowship

1 application was received and funded in 2020.

Dr S De Noon, UCL (*A comprehensive characterisation of osteosarcoma genomes*)

A total spend of £274,668.21

JSPS Clinical Lecturer Support Grant

4 applications were received. 3 were funded

Dr J Gregory, University of Edinburgh (*Understanding the Molecular Signature of Neuro Resilience in Amyotrophic Lateral Sclerosis*)

Dr C Young, University of Leeds (*Towards personalised management of Lynch Syndrome by microbiome profiling of faecal and tissue samples*)

Dr S Aitken, University of Cambridge (*Investigating the histo-genomics of liver cancer*)

A total spend of £299,889.30

JSPS Clinical Lecturer Grant

No applications were received in 2020

JSPS Intermediate Research Fellowship

No applications were received in 2020

JSPS Clinical Academic Research Partnership (CARP) grant – New for 2020

2 applications were received in 2020 and neither was funded

Cancer Research UK/Pathological Society Pre-Doctoral Research Bursary (55/45 split funding) (Deadline dates 26 March and 17 September)



The March application date went ahead but due to the Covid-19 pandemic the funding Committee meeting was deferred until the end of 2020. The September 2020 deadline was cancelled

2 applications were received and funded

Mr M Dave, University of Manchester (*The genetic and epigenetic landscape of sinonasal carcinoma: an opportunity to sub-classify an aggressive cancer for novel treatment approaches*)

Dr C Parker, UCL (*Analyses of Tumour Infiltrating Lymphocytes in lethal Prostate Cancer: a biomarker analysis in the multi-centre STAMPEDE clinical trial*)

A total spend of £80,798.02

Covid-19 related issues

The Covid-19 crisis has significantly impacted students and fellows undertaking PhDs, and the Society has agreed to increase salary costs for an additional 6 months in these instances. No-cost extensions will be granted to those grants covering consumables only.

Dr P Elliot	Jean Shanks Research Training Fellowship awarded in 2018
6 month salary extension cost information)	£45,004.79 (still to be confirmed in writing as waiting for more information)
Dr J Griffin, University of Sheffield	JSPS Clinical PhD awarded in 2018
6 month salary extension cost	£33,744.00
Dr V Rathbone, UCL	JSPS Clinical PhD awarded in 2018
6 month salary extension cost	£36,193.52
Dr S De Noon, UCL	JSPS Clinical PhD awarded in 2018
Dr K Griffin, University of Leeds	Path Society Career Development Fellowship awarded in 2017
6 month salary extension cost	£17,733.15
Prof M Du, University of Cambridge	Path Soc PhD awarded in 2017
6 month salary extension	£7500.00
Prof M Arends, University of Edinburgh	Path Soc PhD awarded in 2017
6 month salary extension	£7500.00
Prof DJ Elliott, Newcastle University	Path Soc PhD awarded in 2018
6 month salary extension	£7642.50

Going forwards

The Research Sub-committee continues to follow a strategy to support the Society's mission of "understanding disease" through high-quality research. In the next 3-5 years, we aim to:

- Continue promoting, designing and refining a variety of research funding schemes accessible by and suited to the needs of all members of the Society, with particular encouragement of trainee pathologists to undertake tissue-based research
- Promote molecular pathology research, training and education, including involvement in the Society's molecular pathology sub-committee with support for its research and education schemes.
- Support research collaborations between the Society's pathologists and scientists elsewhere in the world and in industry
- Establish links with other professional societies and research centres/bodies involved in pathological research (both within the UK, Eire and abroad)

Gareth Thomas, June 2021

AGENDA ITEM 8.3 REPORT OF MOLECULAR PATHOLOGY SUB-COMMITTEE REPORT OF MOLECULAR PATHOLOGY SUB-COMMITTEE

The Molecular Pathology Sub-committee (MPSC) was created in June 2018 and the first Chair was co-opted in 2018 for 3 years. Subsequent Chairs will be elected by the Society membership and will hold this position for 3 years, including being a member of both the full Committee and the Finance and General Purposes Committee. In addition, there will be up to 4 other Society members who will join the MPSC during their tenure on the full committee. Other Officers and Sub-committee Chairs may attend (General Secretary, Research Sub-committee



Chair and Education Sub-committee Chair will be co-opted to serve for the first year or two of the Molecular Pathology Sub-committee to advise on set up and direction of the new sub-committee). Other members and non-members (including an industry representative) may be co-opted (up to 4 and they are non-voting). Membership of the sub-committee is for 3 years. MPSC Chair to be elected 1 year in advance of the retirement of the incumbent Chair to allow shadowing of the Chair for 1 year prior to taking up office

The remit of the MPSC is to further the interests of the Society through the support and development of molecular pathology within the specialty of Pathology, through educational and research initiatives; to foster collaboration with other societies and funders; to develop strategy in this area; to evaluate and recommend funding of applications for research or education orientated programmes, grants and awards; and to report to and advise the full Committee on such issues.

The MPSC meets twice a year, by teleconference, to discuss Molecular Pathology grant funding and any other matters of relevance to the Research aims of the Society. However, due to the COVID-19 pandemic there were no MPSC meetings held in 2020. Minutes of these meetings are available from the Society office.

The original members of the Molecular Pathology Sub-committee (2018) were as follows:

Prof M Salto-Tellez, Belfast	(Chair)
Prof M Arends, Edinburgh	(FGP Representative)
Prof G Thomas, Southampton	(Research Sub-committee Representative)
Dr Y Krishna, Cheshire	(Trainees Sub-committee Representative)
Dr A Mukherjee, Nottingham	(Education Sub-committee Representative)
Prof M Du, Cambridge	
Sidhant Seth, Edinburgh	(Undergraduate Sub-committee Representative)
Dr Susan Richman, Leeds	
Prof R Huss	(Industry Representative)

New members for 2020:

Dr Elizabeth Soilleux, Cambridge
Dr Mohammed Nimir, Coventry (Trainee representative)
Miss Amber Matkowski, Manchester (Undergraduate representative)

The Molecular Pathology Sub-committee would like to thank Prof M Salto-Tellez who retired from the Molecular Pathology Sub-committee at the end of 2020 and has been an integral part of the creation and success of the Molecular Pathology Sub-committee. Dr Marnix Jansen was elected to be the next Chair of the Molecular Pathology Sub-Committee and agreed to step in early as acting Chair of the MPSC in late 2020. Yamini Krishna, Sidhant Seth and Abhik Mukherjee stepped down from the MPSC in 2020 and were replaced by Mohammed Nimir, Amber Matkowski and Elizabeth Soilleux.

The MPSC has pursued a number of initiatives since it was created in 2018.

Trainee-Clinical Scientist Partnership Grant Funding Scheme in Morpho-Molecular Pathology

New for 2019.

Six applications were received, of which one was funded from Dr T Millner, UCL for the project 'Investigating regional heterogeneity and progression-associated markers in oligodendrogliomas' A total spend of £47 146.00.

Pathology International Niche Meeting

This proposed scheme is the subject of ongoing discussions within the Pathological Society Committee. This scheme would support an annual meeting focussed on a specific area of pathological scientific relevance. The meeting would be organized and chaired by an academic pathologist within the Pathological Society with a known academic track record in the area. The meeting would be by invitation only and would include some international speakers and pathologists with an interest in that area of science. The meeting would be around 2 days long and would take place in a specific location. The aim is two-fold: a) to create a UK pathology-based interest group in that area, supported by international experts; and b) to end the meeting with the skeleton of a combined research application with different work packages to submit a grant to one of the leading research charities or agencies.



Expected spend of £15,000.00 per scheme.

Potential Links for Pharma Sponsorship in Future PathSoc Meetings

Winter meetings are predominantly academically orientated to galvanize the academic pathology membership in the UK. In contrast, the joint PathSoc/BDIAP Summer meetings are integrated meetings with sessions on morphology-based diagnosis, tissue and cell-based molecular diagnostics, applied research, diagnostic digital pathology, research digital pathology often with artificial intelligence or machine learning, and translational research. The MPSC highlights potential industry partners, with opportunities for industry to engage with pathologists during the Summer meetings, including biotech/diagnostic companies presenting new technology or new diagnostic approaches and pharma industry presenting new tests associated with individual drugs in specific cancer types.

The list of potential contributors is ready for such use.

Manuel Salto-Tellez & Marnix Jansen, June 2021

AGENDA ITEM 8.4 TRAINEES' SUB-COMMITTEE REPORT

The trainees' sub-committee is responsible for representing the trainee membership of the Society. We work with the trainee community to raise awareness of the Society and the benefits of membership. We aim to facilitate trainees in their research, education and academic pursuits. This year has brought with it a unique set of challenges, but we have taken steps to adapt and support trainees as best as we can, given the circumstances. We look forward to the future and to learn from the numerous virtual events on how to further improve activities even when face-to-face meetings return.

Education, research and working together with the Undergraduate Subcommittee

Members of the Trainees' subcommittee write cases for monthly publication in Diagnostic Histopathology.

There were changes to the "Introduction to Academic Training" event aimed at ST1 histopathology trainees. It had previously been a stand-alone event and then was moved to the block teaching week in 2019. In 2020 it was combined with the National Academic Trainee Network Meeting as a virtual event. There are ongoing discussions on plans for this year's meeting. A decision will be made over the coming months on whether to hold this event virtually again.

This year saw the relaunch of the Pathsoc Trainee Mentoring Scheme. There have been 10 mentors recruited (previously 5) with 21 interested mentees. Formal coaching will be provided for mentors as a virtual event to coincide with the virtual summer meeting.

The Pathsoc Research Trainee Forum was launched this year and ran as 3 monthly meetings in Feb, March and April. This was a 30minute lunchtime meeting to allow for trainees to present to their peers and provide them with an opportunity for virtual presentation practice. It was very well received by trainees and may be relaunched again later in the year if face-to-face events remain difficult to organise.

Plans are underway to launch an educational course later this year in collaboration with the Association of Surgeons in training ASIT. This will be aimed at ST1 trainees, foundation doctors interested in pathology and trainee surgeons.

This year we have also appointed a new Foundation Trainee Advisor who works both with the Trainee Subcommittee and the Undergraduate committee. This will allow there to be a role for communication between Pathsoc trainees and foundation year doctors.

Meetings

We are currently working together with the BDIAP trainee councillors to plan the trainee programme for the Summer 2021 Meeting. As part of this meeting the slide seminar competition will be relaunched.



Fostering Academic Pathology

We help to plan and run the National Academic Trainee Network (NATN) events. These events provide an invaluable forum for networking and gaining skills for a career in academic pathology. Our next event will be delivered virtually to coincide with the virtual summer meeting.

Website and Social Media

The twitter account @pathsoc has approximately 3154 followers (an increase of 387 from last year). It is a useful way to communicate with trainees. We have also launched the Pathsoc Instagram account this year and a following is slowly growing. This is a useful platform for sharing images and the Pathsoc Pet of Month feature has been a popular way to gain engagement from other trainees that use Instagram. This involves featuring a picture of a pathology pet with the case of the month in Diagnostic Histopathology. We also have a NATN WhatsApp group and create a Trainee WhatsApp group at Summer and Winter Meetings.

We continue to support the Society in maintaining the trainee-section of the PathSoc website to ensure that it remains an up to date and useful educational tool and source of information. We have also enjoyed working with Dr Ali Khurram to provide feedback on the development of the new website. We welcome further feedback and ideas.

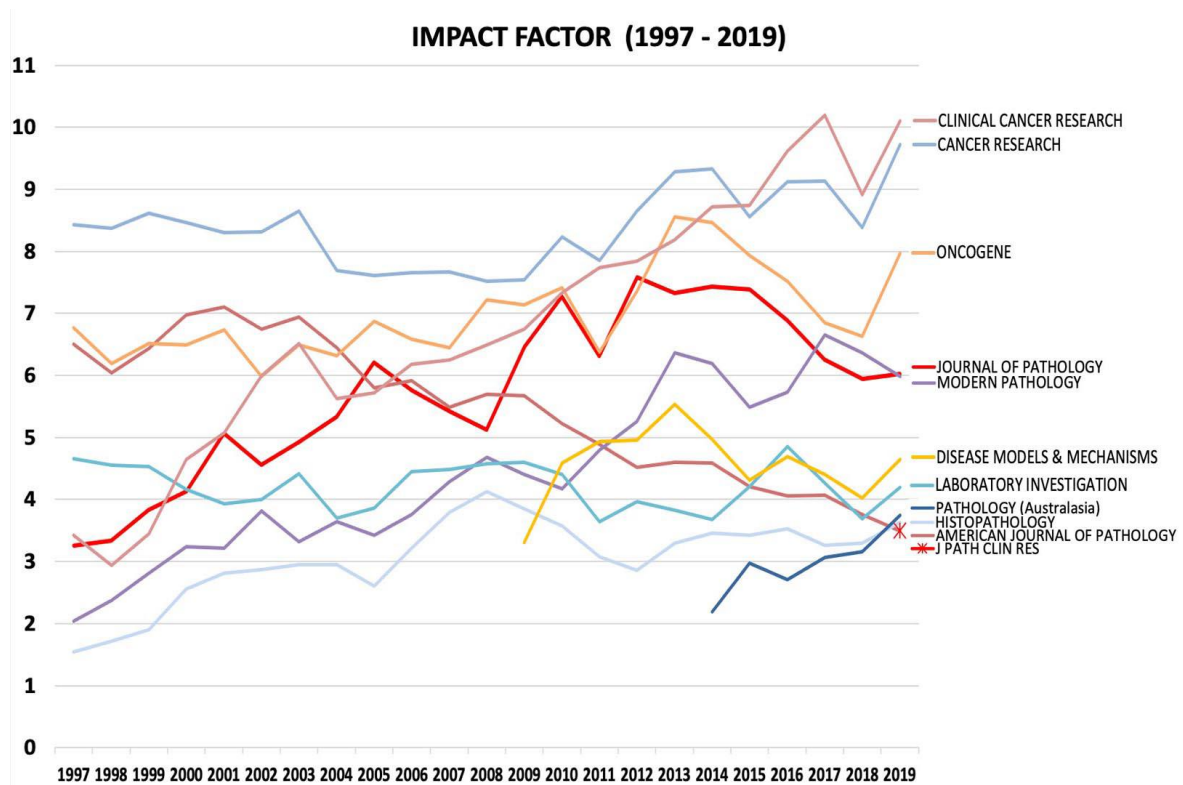
I would like to sincerely thank the members of the Trainees' subcommittee for all their hard work this year. Dr John Connelly will be stepping down and I'm very grateful for his valuable role organising and running the NATN meetings. I look forward to the newly elected members joining our team.

Kate Marks, June 2021

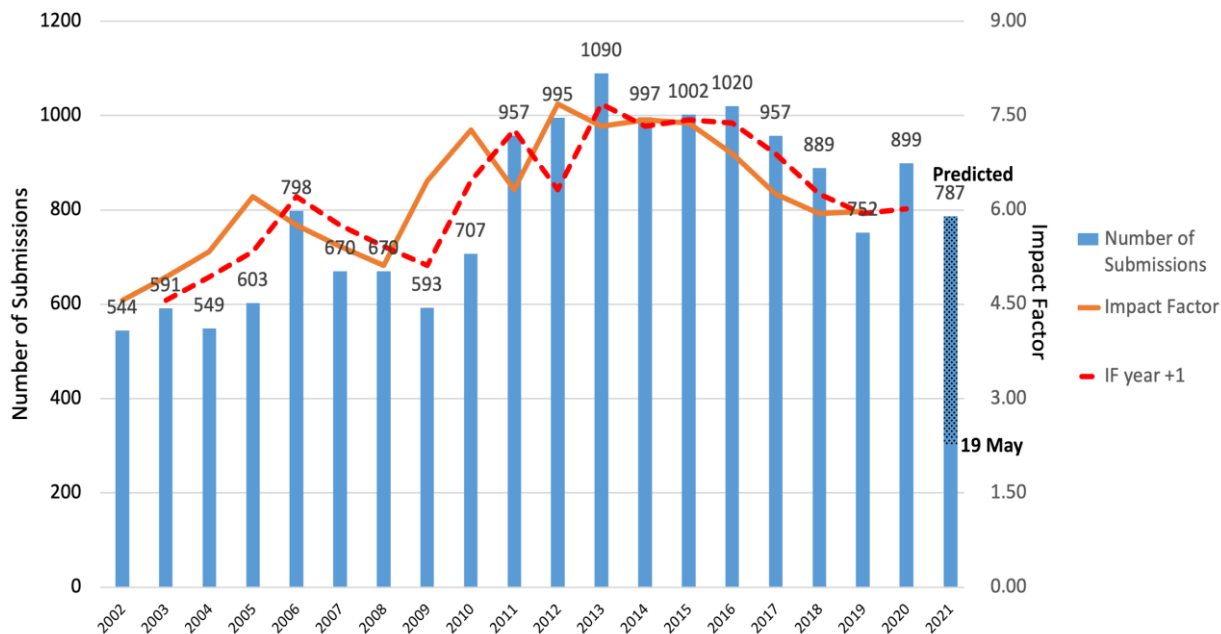
AGENDA ITEM 9.1: EDITORS REPORT, JOURNAL OF PATHOLOGY



1. Clarivate Analytics' latest Impact Factor (IF) is 6.021 (2019; corrected from 5.979 by Clarivate). The journal remains strong in comparison with close pathology and oncology competitors. We retain the top ranking for general pathology research journals and overall are 5/78 in Pathology, 40/244 in Oncology. Clarivate's new method for calculating IF (from the date of the version of record rather than the issue) will increase the IF for many journals with unpredictable effects on rankings.



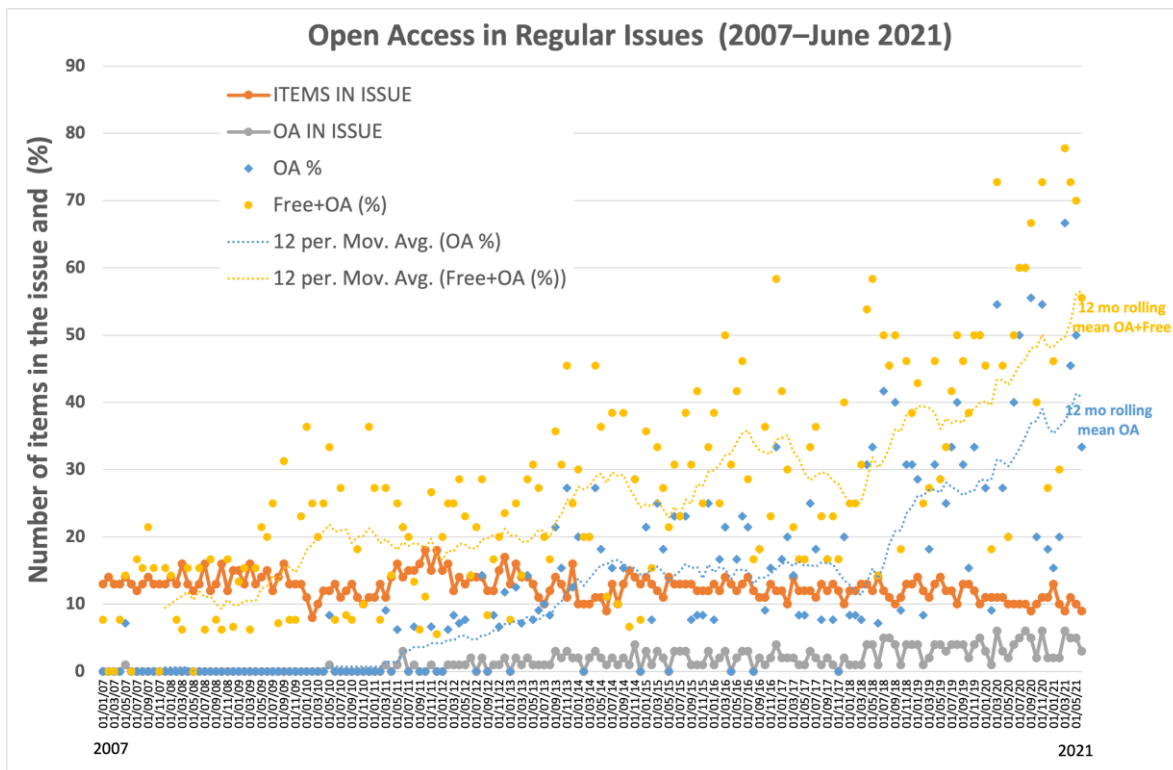
2. In addition to attracting the best papers addressing disease mechanisms, high quality regular review material augmenting the Annual Review Issues and marketing the Journal to non-traditional scientific and clinical groups are key for maintaining and improving our position. The journal’s website had long-awaited improvements made by teams within our current publisher, Wiley.
3. The current editorial team has Simon Herrington as Editor in Chief. Richard Poulson is full time Scientific Editor; he shepherds the Annual Review Issue (ARI), works on the triage rota, edits most manuscripts prior to acceptance and continues to screen figures in submitted manuscripts entering review. Anomalies are identified in approximately 10% of these, and this continues to be a significant and important workload. Phil Coates is a Senior Editor with ~25% commitment to the Journal and particular responsibility for Invited Commentaries, Invited Reviews and Virtual Issues (re-emphasising the availability of articles within a theme). The Associate Editors are Ming Du, Will Foulkes, Steve Fox, David Huntsman, Rachael Natrajan, Nischalan Pillay, Jorge Reis-Filho, Brian Rubin, Louise van der Weyden, and Laura Wood. Our editors have worked well to obtain peer-reviews for manuscripts even though Covid-19 restrictions have placed increased pressures on reviewers’ time. This year has been challenging for editors following Wiley’s changes to many teams and systems around the globe. Despite this, all regular issues of the journal have been published on time.
4. Submission numbers appear to shadow the Impact Factor. The number of items published has decreased slightly, but it is our perception that the quality of accepted articles has been maintained.



Our effective and robust triage system involves at least 3 members of the editorial team (on a rota basis). In the last 2 years, 26% of submissions were sent for external review (overall 2-year acceptance rate of 14% of submitted non-ARI articles). In the last 12 months the time to first decision averaged 9.8 days and to final decision 15.5 days; good compared with other journals and improved over last year. Manuscripts from PR China now provide 38% of submissions (14% of these enter review)(2-year averages).

5. The **2021 Annual Review Issue** 'Recent Advances in Pathology' with Editors C Simon Herrington, Richard Poulson, Hartmut Koeppen and Philip J Coates is expected to be published in July, later than planned due to delayed delivery of manuscripts and production processes. The 2019 ARI and especially the 2020 ARI have attracted good rates of citation so far. Invitations are being planned for the 2022 ARI, also themed 'Recent Advances in Pathology'.
6. **Open Access publication.** As discussed previously the pace of change towards fully Open Access publishing may become rapid, although last year the European Research Council's Scientific Council [signalled](#) its opposition to making hybrid journals (such as The Journal of Pathology) non-compliant with Horizon Europe funding.

The proportion of items published in The Journal of Pathology with Open Access is increasing (see Figure below); 50% may require us (and the publisher) to consider if our current hybrid publishing model is sustainable.



7. **COVID-19.** The pandemic has caused widespread closure of scientific institutions and many may not open fully for months. Wiley and other production staff around the world have adapted well to home-based working and other than the 2021 ARI there has not been significant disruption of our publication schedule. We saw a brief increase in submissions while researchers finalised manuscripts in hand but anticipated a longer-term decrease in submissions because researchers would not be able to resume normal working. Manuscripts in revision have been handled sympathetically. Marketing has been limited by the cancellation of major conferences; those operating virtually offer little opportunity for advocacy. To date we have received 95 manuscripts related to COVID-19 / SARS-CoV-2; of these 16 entered review, 4 were offered a transfer of files to J Pathol Clin Res, and 11 have been accepted so far (both journals combined).
8. Finally, I would like to thank all the Editors, staff at Wiley and associated vendors, the Editorial Board, authors, and reviewers for their continuing and strong support for the Journal: without them, and the readers, there would be no Journal.

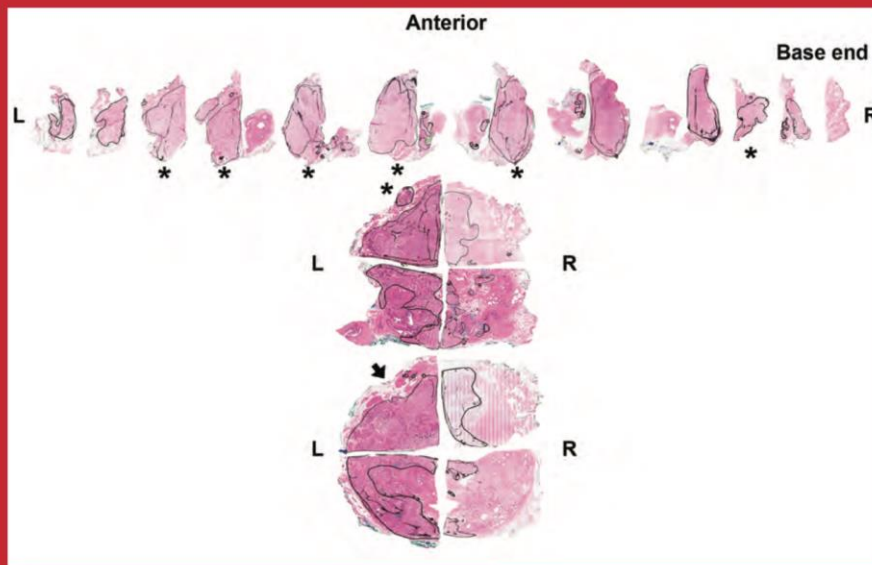
Simon Herrington, Editor in Chief
The Journal of Pathology
May 20th, 2021



WILEY
Blackwell

THE JOURNAL OF Pathology

Understanding Disease



www.thejournalofpathology.com

Volume 254 • Number 2

June 2021

Contents include:

- A classification framework for histone alterations
- Xenograft models of AR enhancer amplifications
- Real-world validation of Paige Prostate
- A synthetic model of IgA nephropathy
- Machine learning and SARS-CoV-2 acute respiratory failure
- ZEB1 in bone development and osteosarcoma

 A Journal of
The Pathological Society

ISSN 0022-3417

Publishing since 1892
Over 125 Years of Research Excellence

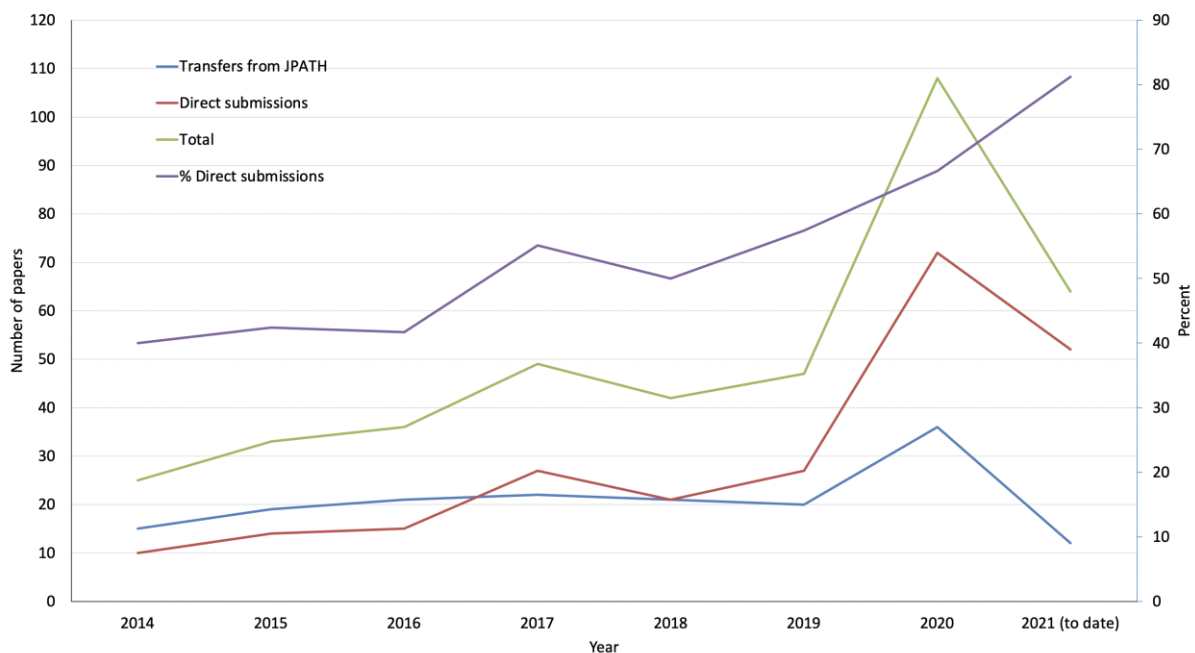
Cover illustration: LH Porter, A Bakshi *et al*, *J Pathol* 2021; **254**: 121–134



THE JOURNAL OF PATHOLOGY
Clinical Research
Understanding Disease – Guiding Therapy
Open Access

A Journal of
The Pathological Society

1. The Journal of Pathology: Clinical Research (JPCR) continues to expand rapidly. Subsequent to the announcement in June 2020 of the Journal’s first impact factor (3.489), the number of submissions has risen rapidly, allowing the number of issues of the journal to be increased from 4 to 6 per annum, with typically 8 rather than 6 articles included in each issue. The majority of this increase is due to an increase in direct submissions, as shown below. This is an excellent position from which to continue to build the Journal over the next few years.



2. The current position, compared to data from the previous last two years’ reports, is shown below:

	27/05/2019	23/07/2020	20/05/2020
Submissions			
Invitations to transfer from J Path	468	570	623
Total submissions	198	270	404
Reviews	10	16	24
Editorials	3	3	3
Transfers from J Path	103	137	166
Direct submissions	95	133	238
Outcomes			
Accept	117	154	196
• In issues	109	143	174
• In EarlyView	5	7	15
• With Production	2	4	7
Minor revision	0	1	1
Major revision	4	3	9
Reject	47	57	77



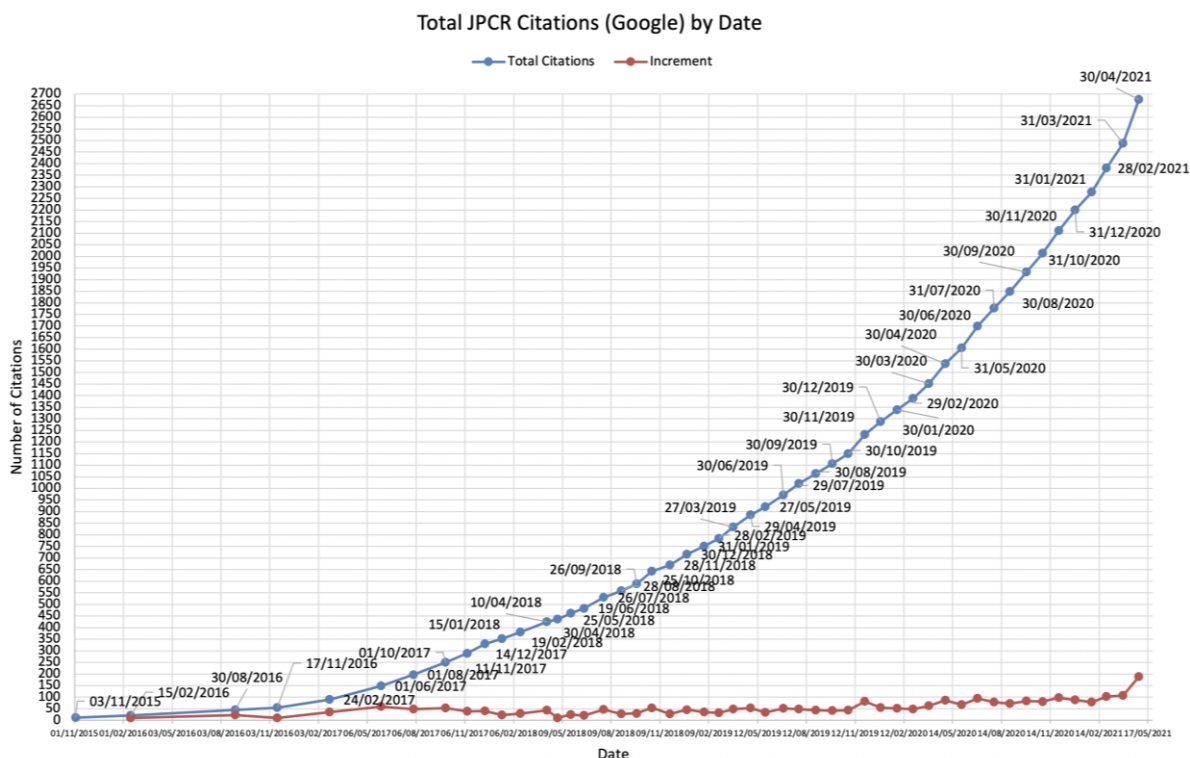
Refer elsewhere	15	31	99
Withdrawn	12	14	18
Under review	3	10	4

- There is still a clear difference in outcome for papers transferred from JPATH compared with direct submissions; this is becoming more pronounced due to the introduction of a triage system, with a significant proportion of direct submissions now being rejected following internal review:

	N	Accepted
Total with final decision	390	196 (50.3%, previously 60.2%)
Transfers from JPATH	162	118 (72.8%, previously 73.4%)
Direct submissions	228	78 (34.2%, previously 46.9%)

- 27 issues, each of at least 6 articles, have been published, the current issue being May 2021. All articles, including those in Early View, are available from the Journal website:
<https://onlinelibrary.wiley.com/toc/20564538>

- Citations to articles published in the Journal are increasingly steadily, with early indication of a rise, as shown by cumulative analysis of citations identified using Google:



- In view of the cancellation of most face-to-face meetings and conferences, marketing is focusing on social media and email-based campaigns, in addition to advocacy by members of the editorial team.
- There have again been significant changes at Wiley over the last year. The Senior Journals Publishing Manager, Lena Jacobsen, remains but the editorial office is now managed by Jeaneen Smith, who is based at Wiley in New Jersey, USA, and Aarthi Sharma, based in India. Production continues to be based in Singapore (Wati Ahmad) and Chennai, India (Priya Janaki). The journal also has a new marketer, Josh Hendrick (New Jersey, USA), who is developing new marketing strategies. This year has been challenging for editors following Wiley’s changes to many teams and systems around the globe. Despite this, all regular issues of the journal have been published on time.



8. Finally, I would like to thank the Editors, staff at Wiley and their vendors, the authors and reviewers for their huge support as we develop the Journal into a successful publication.

Simon Herrington, Editor in Chief
The Journal of Pathology: Clinical Research
May 20th 2021



Cover illustration: Lim *et al*, *J Pathol Clin Res* 2021; **7**: 191-202 (May 2021)



UNDERGRADUTE SUB-COMMITTEE REPORT (not on the Agenda)

UGSC Members

Members at the start of the year:

Chair - Amber Matkowski

Vice Chair - Roberta Turner

Current members:

IT & Social Media Officers - Lynn Asante-Asare and Pappitha Raja.

Event Organisers - Jonathan Callaghan and Leshanth Uthayanan

Regional Coordinators - See Appendix C below.

Activity over the past year

Handover from previous Chair, Roberta Turner, was successful. A new UGSC panel of students were recruited, including two new roles: IT & Social Media Officers and Event Organisers. All spaces have been filled except for Regional Coordinator for the North East.

Communication

The new committee members maintain regular remote communication via Zoom meetings and a group Slack account. Our Slack group was launched recently to encourage open communication across all roles and also includes areas for discussion of specific topics, e.g. plans for the Summer Meeting 2021. In addition, efforts have been made to organise the existing GoogleDrive account to aid in future handovers and media sharing.

Social media

Lynn Asante-Asare is actively managing our Twitter account and has contributed significantly to improving our social media presence. Contact has been made with an influential pathologist on Twitter who will be assisting us in widening engagement so that we can inform more undergraduates of the generous PathSoc offerings and encourage membership. Amber and Lynn are meeting regularly to ensure our social media presence will be as strong as possible in preparation for and during the upcoming Summer Meeting. This will also include the development of a social media pack tailored to the UGSC, which our other members (including Regional Coordinators) will use to promote the Undergraduate Day (and other sessions of interest) more widely.

Future plans

Events

The pandemic hindered our plans for upcoming events, including the Undergraduate Summer School. Our event planning was also delayed by the absence of other UGSC members. The Events Organisers are now actively working on ideas for events that we can run with social distancing in mind. The team are aiming to find ways to engage students that are unique, as students have expressed a lack of interest in webinars due to the overwhelming abundance of them in light of the pandemic.

The upcoming Summer Meeting 2021 includes a dedicated Undergraduate Day, as well as numerous other sessions that will appeal to undergraduates. We will use this opportunity to promote the UGSC on social media and inform students of PathSoc offerings throughout the Undergraduate Day. The sessions have been planned with feedback from previous conferences in mind and the day will also include a lab tour and interactive quiz.



Engagement

The newly recruited students are academically exceptional and incredibly passionate about pathology and improving student engagement with pathology. Most of the students have benefited from PathSoc bursaries in the past and this scheme proves to be very successful at encouraging an undergraduate interest in pathology. Unfortunately, many students are not aware of these benefits of membership. We will continue to promote the PathSoc offerings on social media, as well as running a session during our Summer Meeting Undergraduate Day dedicated to providing this information.

The UGSC and other PathSoc undergraduates strongly feel that one of the best ways for us to engage with students is via a website. This can serve as a place to easily access information and can be used as a point of reference for students to return to. We would like to include regular updates regarding events and UGSC meetings; pages where undergraduates can read about previous events, including photos and student reflections; key information about what pathology is and how they can get involved with it; advice on how to set up societies and run events independently; and include an active blog with current news, experiences, and ‘case-of-the-month’ posts.

An important aspect of the Regional Coordinator role is to promote PathSoc in their local area. Alongside assistance from the Event Organisers, they have been creating posters and fliers; starting and maintaining local PathSoc groups, as well as promoting PathSoc through other related groups (e.g. academic medicine societies); dissemination PathSoc information throughout their medical school; and engaging well with their local PathSoc Ambassadors. Notably, the Ambassador engagement has improved significantly in comparison to previous years.

Amber Matkowski is graduating into FY1 training and applications for a new Chair will be disseminated in June.

Appendix C – Complete List of UGSC Members 2021

RC Region	Name	Medical school	Graduation
Scotland (RS)	Hayley Stanway	University of Glasgow	2023
Scotland (RS)	Agata Strunzova	University of Glasgow	2024
Northern Ireland	Johnny Callaghan	Queens University Belfast	2022
Wales	Paaras Doshi	University of Keele	2023
North West	Manavi Purohit	University of Manchester	2024
North East			
West Midlands	Mirna Elghobashy	University of Birmingham	2023
East Midlands	Nekmee Gunasekera	University of Nottingham	2023
South West	Alex Matthews	University of Bristol	2024
East	Ada Lam	University of Cambridge	2024
London	Tom Watkins	University College London	2022
Events	Jonathan Callaghan	Queens University Belfast	2022
	Leshanth Uthayanan	Imperial College London	2024
Social	Pappitha Raja	Queens University Belfast	2022
	Lynn Asante-Asare	University of Leeds	2024



Chair	Amber Matkowski	University of Manchester	2021
Vice Chair	Roberta Turner	University of Leeds	2022

RC, Regional Coordinator; RS, role-share.

Amber Matkowski
Chair, Undergraduate Sub-committee
June 2021