

**NOTES ON THE ANNUAL BUSINESS MEETING
THURSDAY 5 JULY 2012, 14.00 HRS
UNIVERSITY OF SHEFFIELD,
Auditorium, Students' Union Building, Western Bank, S10 2TQ**

OVERVIEW OF THE YEAR

In order to improve the timeliness of the meeting, brief verbal reports will be given at the Business Meeting. The following notes are designed to accompany the Annual Business Meeting.

AGENDA ITEM No 5: THE PRESIDENT'S REPORT

By many criteria, the past year has been another in which the Pathological Society has proved itself to be a healthy, growing and fit-for purpose organisation. Membership continues to rise, the summer and winter meetings have included high quality symposia on topical issues, impressive plenary sessions, and more than 100 posters - a high proportion from young scientists and trainees presenting their work for the first time. The Society's suite of career-supporting awards now includes a Clinical Academic Fellowship (funded jointly by the Jane Shanks Foundation and the Society), in addition to longer-established post-graduate studentships, the very helpful Career Development Award, and a number of smaller grants for purchase of equipment, facilitating study visits, and fostering of international collaborations. The major awards have attracted promising candidates this year. Designed for younger candidates, the popular Undergraduate Bursaries and Intercalated Degree awards, and a new undergraduate seminar speaker award, aim to help students into an early experience of research while their minds are still open to career choices.

Financial resource for most of these schemes would not be available, however, were it not for the Society's *Journal*. The *Journal of Pathology* has had a spectacular year, its citation index climbing to over 7.0. As its subtitle declares, the philosophy of the *Journal* is *Understanding Disease*, the same as the Society's mission. So it is instructive to ask what are the characteristics of the authors who publish in *J Path*? Of course, these are ambitious people who expect and enjoy the swift, highly professional handling of their manuscripts that the Editorial Team of the *Journal* provides, but a survey of the Corresponding Authors over several recent issues of the *Journal* reveals additional features of the *J Path* authorship (and readership). For example, they are a truly international group; in this short survey, more than three quarters of recent papers in *J Path* came from outside UK. Reflecting trends in research organisation in many countries, around half of the Corresponding Authors work in interdisciplinary research institutes, based around major disease themes, rather than in traditional University Departments. Human tissue, collected expressly for research, and frequently with matching clinical data, was the core study material in just under half the papers, whilst around one third described animal models (sometimes in addition to the human tissue). Studies exclusively on cell lines (once very common) accounted for a minority only. Tissues, animals and cell lines were analysed by a wide variety of molecular and imaging methods. In around two-thirds of all the papers, however, high quality tissue immunocytochemistry featured as a significant element in the argument. Cancer was by far the commonest disease process in these papers, but there were also studies of other conditions including metabolic disorders, inflammation, cell injury and (neuro)degenerative disease.

Is this a template for the future of the pathology that seeks to *understand disease*? Much of the picture is already familiar: human disease studied in human tissues and in animal models where accurate molecular facsimiles can be found; multidisciplinary research centres; hospitals with a research culture such that suitably anonymised but codified clinical histories can be matched to the relevant tissues; and, most importantly, people (medical and scientific) trained to understand, respect and - as appropriate - participate in each other's technology. Who will teach them? How will their

clinical activities be regulated? Will they discover that the understanding of disease is easier in some countries than it is in UK? Whatever the answers, the Pathological Society will be doing what it can to identify and support them.

This is my last Report as President. It has been a pleasure as well as a privilege to hold this role, and to get to know and work with all the members of the Society's Main Committee and its subcommittees. I wish the very best for my successor, Prof Ian Ellis, for the new members of these committees, for those who, like me, have stepped down, and for the indispensable Ros Pitts and Julie Johnstone.

Andrew Wyllie, June 2012

AGENDA ITEM No 6: GENERAL SECRETARY'S REPORT

6.1 Rule Changes

The Annual Business Meeting book (circulated separately to members) contains details of the changes to rules 9 and 11, which will provide a degree of flexibility in the size of the committee, the latter having been determined when the Society included microbiology members (prior to 2001). These changes were agreed at the 2011 ABM and come into effect at the 2012 ABM.

6.2 Proposed Rule Change

It is proposed that the Society become incorporated (see Treasurer's report). To reflect this, it is proposed that rule 5 be changed from:

Current wording

'The Treasurer shall collect the subscriptions of members and shall notify to the committee the cases of any members whose subscriptions are one year in arrears. He/she shall pay accounts due by the Society and shall cause to be circulated to the members before the annual business meeting the audited accounts and balance sheet. In the case of any expenditure the advisability of which he/she doubts, he/she shall take the opinion of the committee. The assets will be held by Trustees who shall be the General Secretary and the Treasurer for the time being of the Society, which Trustees shall be entitled to any indemnity from the Society and its members in respect of any obligations which the Trustees may lawfully enter into for the Society.'

to

Proposed new wording (changes in italics)

'The Treasurer shall collect the subscriptions of members and shall notify to the committee the cases of any members whose subscriptions are one year in arrears. He/she shall pay accounts due by the Society and shall cause to be circulated to the members before the annual business meeting the audited accounts and balance sheet. In the case of any expenditure the advisability of which he/she doubts, he/she shall take the opinion of the committee. *The assets will be held by the incorporated trustees in the name "Trustees of the Pathological Society". Any Trustees of the Society from time to time shall be entitled to any indemnity from the Society and its members in respect of any obligations which the Trustees may lawfully enter into for the Society.'*

6.3 Society Lectures, Medals and Awards

Members are referred to the General Secretary's notices for deadlines for nomination/application for this year's lectures, medals and awards.

6.4 Membership

I am pleased to report that membership numbers have increased once again and, at the time of writing, stand at 1518. As last year, this reflects not only that more people are joining the Society but also that concessionary members are converting to ordinary membership when they move into career grade posts.

6.5 Society Committee Awayday

A very successful Awayday was held on October 7, 2011 in the Royal College of Pathologists. A full report is given as Appendices A and B: this gives a number of suggestions for the way forward for the Society, many of which have already been implemented.

Simon Herrington, June 2012

AGENDA ITEM No. 7 – TREASURER’S REPORT

Firstly, many thanks to Alastair Burt who after 8 ½ years as Treasurer passed on some very healthy finances. Alastair handed over the accounts with the stock markets on a high, they immediately dropped and as you have probably noticed have been up and down all year.

I shadowed Alastair for six months before taking the reins in January so Alastair could concentrate on his new role of Editor of Histopathology. I am fortunate that Ros Pitts has a very good understanding of the accounts and took me through the various incomings and payments. Charity law is becoming increasingly strict and requires that we manage our resources in the interests of the charity and ensure that we are acting prudently at all times. Together we set a budget for 2012 broadly based on last year’s outgoings. Most of the budget is determined by the regular grants that are awarded during the year. However there are numerous other payments from insurance to legal fees and even our share of the cost of repainting 2 Carlton House Terrace. The servers and computer equipment in the office were over 6 years old and since they are essential for the Society to function, they were replaced this year. By way of Governance, we have full Committee meetings at the Winter and Summer Society meetings together with quarterly Finance and General Purpose Sub-committee teleconference meetings involving the President, General Secretary, Treasurer, Meetings Secretary, Chairs of the Research, Education & Training and Trainee Sub-committees, the Administrator (Ros Pitts) Deputy Administrator (Julie Johnstone) and the Editor of the *Journal of Pathology*. This ensures that we are all abreast of the issues facing the Society.

The bulk of our income comes from the success of the *Journal of Pathology*. Peter Hall and Richard Poulosom, Editor and Deputy Editor, respectively work tirelessly, aided by the team at Wiley Blackwell to enhance the reputation of the *Journal* which is reflected in the high impact factor achieved. We are very grateful for their efforts in this highly competitive time. We are keeping the threat of on-line journals under review because loss of income from the journal could seriously affect our ability to award grants. Apart from the membership fees and our other major income is from our investments. We have taken a balanced view at the moment to ensure a modest income from the investments without eating into the capital. Although the suggestion has been made that we should reduce the capital by increasing our grants, we have yet to establish which award gives the biggest return to Pathology in the UK and Ireland. With the threat to our income from free on-line journals and the instability of the world stock markets I believe it is prudent to conserve our capital until it is clear where the benefit to Pathology lies.

Last autumn Ros and I attended a briefing run by our solicitors detailing the responsibilities of Trustees. A number of things came to light including the difference between being incorporated or a non-incorporated charity such as the Pathological Society. Since the Pathological Society is not a legal entity, all legal documents, including our lease, have to be signed by individual Trustees and have to be changed every time that individual changes. Incorporation of the whole charity is a major undertaking, would require the consent of the membership and could not be conducted before 2013. We will be looking at the pro and cons of this over the coming year and, if appropriate will bring a resolution to the Annual Business Meeting in June 2013. In the meantime, on the advice of our solicitors, we have applied to the Charity Commission to incorporate the Trustees to create “the Trustees of the Pathological Society”. This will allow all documents to be made out and signed in the name of the Trustees irrespective of who they are at the time and means that legal documents will contain reference to the Pathological Society of Great Britain and Ireland.

Somewhat related to this is the forthcoming meeting with the European Society of Pathology in August/September 2014. This will be a very large meeting, shared with the ESP. Since the costs and

income are much bigger than usual Pathological Society events, we are looking at the best way of handling this joint venture for the benefit of both societies.

You can peruse the abbreviated accounts for 2011 which were sent to you with the 2012 ABM Agenda document. We made an operating profit in the year of £247,124. The aforementioned instability of the markets conspired against us so the capital value of our investments decreased over the year. Regrettably, I have to report a small loss over the year of £2,104. Given the instability of the Euro and European stock markets in particular, we have worked with Cazenove to ensure our investments are well diversified across the world as well as across a range of different categories of investment. Whilst we will not be immune to the turmoil in the investment markets we hope to minimise the negative effects on our assets. The reports we receive from the Cazenove have been accurate and helpful and I propose we retain their services for a further year. Similarly our accountants Alliotts have worked efficiently with Ros and Julie so I propose to also retain their services.

Nick Rooney, June 2012

AGENDA ITEM No. 8 – MEETINGS SECRETARY'S REPORT

2011

Ghent Pathology 2011: 10-13 May – Joint Meeting with the BDIAP, University of Ghent, Belgium

This proved to be a successful, enjoyable and reasonably well attended meeting at an excellent venue. We would like to thank Professor Claude Cuvelier and his team for their work and commitment in putting together the excellent and well received programme and for hosting this meeting

- **Abstracts submitted - 121 comprising 6 Plenary Oral, 38 Oral and 77 Poster presentations**
- **Delegates** - in total, excluding invited speakers - 319
- Feedback details (Appendix C)

2012

5-6 January Winter Meeting, held at Guoman Tower Hotel, London hosted by Barts and The London

The meeting was well attended and received excellent feedback. The venue, worked well. We would like to thank Professor Jo Martin and her colleagues for organizing the meeting and putting together such a well received programme

- **Abstracts submitted – 122 comprising 8 Plenary Oral and 112 Poster Presentations**
- Delegates –in total, excluding invited speakers - 177
- Feedback details (Appendix D)

Future Meetings

2013

8-9 January Joint Meeting with the Dutch Pathological Society, Utrecht, The Netherlands
18-21 June Edinburgh Pathology 2013, Joint Meeting with the BDIAP

2014

31 August-4 Sept Joint Meeting with the European Society of Pathology, ExCeL, London

Ian Ellis, June 2012

AGENDA ITEM No. 9.1 EDUCATION SUB-COMMITTEE REPORT

The Education subcommittee has continued to be active throughout the year. Most of our work has been conducted by email and teleconference meetings.

We have achieved the following:

Undergraduate elective bursary and prize

The annual budget of £30,000 is split equally into 2 application rounds. Applications are marked and funded in order of ranking. Applications have increased recently in both quality and number, 47 this year, resulting in significant work for the Sub-committee members.

Each recipient of a bursary is required to submit a report. The applicant judged to have submitted the best elective report over the yearly cycle receives a prize and will be invited to present their work at a future Society Meeting. This was judged by the Sub-committee, which represents nearly double the work of the initial bursary review. The winner of the elective bursary prize for 2011 was awarded to H Murphy (Peninsula Medical School): "Prevalence and Risk of Buruli Ulcer (PROBE) Study".

Undergraduate Essay Competition

This essay prize is offered annually and the winner is invited to receive the £500 prize at the Society winter Meeting in the following year. Timothy Shaw from Queen's University, Belfast, the winner of the 2011 essay prize entitled "*So, what will the pathologist be doing in ten years' time?*" was presented with his prize at the Barts and London meeting in January 2012.

The title of the 2012 prize essay is: "*Pathology has been called the hidden science that saves lives. Discuss how pathology directly impacts on patients, and compare the past, present and possible future effects of pathology on a patient's journey*"

With the author's consent, the winning essay is published on the Society's website.

Intercalated BSc

The application process has been changed to student application only, in contrast to a mix of medical school and student application, as fewer medical schools now offer iBSc in pathology. The funding has also been altered in 2011-12 to cover tuition fees to enable students not receiving local authority grants to pursue research projects, together with a stipend of £2000, but withdrawal of funding of consumables.

8 applications were received from students from 3 medical schools; 6 from Univ of Leicester. These were scored by the Sub-committee. 7 out of 8 students were funded. These were all considered high-quality. 2 of these students did not require funding of tuition fees as they receive NHS bursaries.

It is emphasised that each student receiving a Society award would be expected to submit their work, either as an oral presentation or poster, at the winter meeting following completion of their degree. Supervisors would be politely reminded to encourage their students to do this.

Seminars for Students Scheme

This is a newly introduced scheme to support promotion of pathology by undergraduate student societies to other students.

2 applications for scheme in 2011 - both funded. One was for an invited speaker for the Cambridge University Clinical Research Society 2012. The aims of the Seminar were to provide a definition and overview of pathology as a discipline, to highlight the importance of understanding pathology to improve disease management; to emphasise the potential for research to facilitate future treatments and patient care. A report was submitted after the event, including good student evaluation

The second was a series of 10 evening slide-based pathology seminars hosted by the Southampton student oncology society,

Path Society Educational Day Meeting

The 2011 meeting was organised and hosted by Dan Berney. Entitled *"The borderlands of Molecular pathology & Urogenital pathology - what should a diagnostic pathologist know?"*, it was held at the Royal College of Pathologists on 16 November 2011.

It was decided at the Awayday that this type of educational activity would discontinue due to competition of similar events by specialist societies and lack of study leave opportunities by members and other NHS consultants.

Educational Grant scheme

No applicants in 2011 or 2012

Path Society Winter School

The Winter School ran under the leadership of Nigel Kirkham. He is stepping down as from 2012 and the Society is deeply grateful for his service and contribution to its success over a number of years.

Catherine Horsfield and Alison Winstanley will take over from Jan 2013.

Adrian Bateman will step down from this Sub-committee in July 2012 and we thank him for his excellent contribution in the scoring of large number of applications and reports and for organizing and hosting a successful Educational day on gastrointestinal pathology.

Under discussion and consideration are the future of the Society Summer School, including its purpose, role, format, leadership and course contributors and publicity for and membership engagement for education grants and Seminars for Students Scheme.

Jade Chow, June 2012

AGENDA ITEM No. 9.2 REPORT OF RESEARCH SUB-COMMITTEE

Promotion of pathological research is one of the key aims of the Pathological Society which runs a number of schemes to support such research and these are administered by the Research Sub-committee. The Society's research scheme portfolio aims to develop and support young academic pathologists, as well as supporting established academics. Hence, our schemes support trainees to move from the initial stages of a research idea through to running a full research project.

Small Grants Scheme

This scheme is aimed mainly at supervised trainees (usually Specialist Registrars/Trainees or Honorary Specialist Registrars/Trainees), to undertake investigative research in order to facilitate the generation of pilot data in support of a hypothesis to take forward to a substantive grant application to a Research Council or major medical charity. This scheme continues to attract high quality applications. We make research funds available to individual applicants up to a maximum of £10,000. The Small Grant is intended to be used for reagents or contribute towards a piece of equipment for research to underpin a project. In November 2011, 5 Small Grant awards (from 9 applications reviewed) were funded; and in April 2012, 3 Small Grant awards (from 4 applications received) were funded.

PhD Studentships Scheme

Established researchers can apply to host a traditional three-year PhD studentship. Support covers stipend, tuition fees (UK only), a research training and support grant and a conference allowance (at Medical Research Council levels, with London Weighting if applicable). Over the past few years this has consistently been our most competitive funding programme with many very good or excellent quality projects turned down. This year (November 2011) two new PhD Studentship awards were funded (from a particularly strong field of 12 applications that were reviewed).

Pathological Research Training Fellowships (Pathological Society & Jean Shanks Foundation Pathological Research Training Fellowships) Scheme

This is a new scheme which was set up and run for the first time this year (2011/2012). Academically orientated trainees wishing to undertake a 3 year PhD project can apply to this scheme for support to cover stipend, tuition fees (UK only), and a consumables grant. One new research fellowship award was funded (from a very strong field of 4 applications that were reviewed).

Career Development Fellowships Scheme

The Career Development Fellowships scheme, which was launched in 2010, is designed to provide funding for the transition or bridging period between finishing a PhD or MD and the completion of clinical training by young academic pathologists. This is an important period of the career of a young academic during which the momentum of their research should be supported for movement on to a Clinician Scientist or Senior Lecturer post. This scheme provides some technical support and funding for consumables over a 2 year period (with possible extension to a third year), for high quality research programmes which build on the candidate's track record. The Sub-committee agreed to fund 1 Career Development Fellowship in 2011 and is currently considering the funding of Career Development Fellowships in 2012.

Sino-European Collaborative Awards Scheme

This award has been modified to change the deadline to 1 October with an increase in funding for this award, up to a maximum funding level of £10,000 to be used in a more flexible and multipurpose way (up to £5,000 for travel, £5,000 for laboratory running costs, £3,000 for sending specimens – up to a maximum of £10,000 in total per award). The intention is to encourage greater links between pathological researchers in Europe and China/Hong Kong. One application was supported through modification of the proposed arrangements this year.

Japanese-European Collaborative Awards Scheme

The Japanese-European Collaborative Award (£5000) was re-launched in 2010 and is jointly funded by ourselves and the Japanese Pathological Society. It is designed to promote meaningful and long term collaborations in any area of pathological research or scholarship (including undergraduate education). One 2011 application was received and funding was agreed. The award is being administered by the Pathological Society of Great Britain and Ireland in 2012 (and the future of this scheme is now being reviewed).

International Collaborative Awards Scheme

This award was established for the first time in 2012 (following discussions at the Pathological Society Away Day) with the deadline on 1 October and funding of £10,000 to be used in a flexible and multipurpose way (up to £5,000 for travel, £5,000 for laboratory running costs, £3,000 for sending specimens – up to a maximum of £10,000 in total per award). The intention is to encourage greater links between pathological researchers in Europe and other parts of the world.

Equipment Awards Scheme

This award was established for the first time in 2012 (following discussions at the Pathological Society Away Day) with 2 deadlines per year on 1 April and 1 October with funding of up to £10,000 to be used in a flexible way for part-funding of equipment, with other sources of funding and usually for the type of equipment that can be used in more than one project.

Visiting Fellowships Scheme

The Visiting Fellowship (formerly "Fellowship") scheme is for members of the medical and allied scientific professions working in pathologically-related biomedical research to enable travel to other institutions to learn new techniques of value in their research. Experience or new methods which may be learned at a different centre, often overseas, can be invaluable for certain research projects. Visiting Fellowships are available for a period of study of up to twelve months. The Research Sub-committee has agreed that preference will be given to applicants wishing to learn new techniques in

the fields of molecular and cell biology. A maximum sum of £5,000 will be allocated to any one person. Most of the applications to this scheme are from members of the Society, but we also support applications from non-members. We received 2 applications to this scheme this year and 1 was funded.

There are mechanisms for review of applications for all of the schemes by the members of the Research Sub-committee, and for awards of more than £20,000 an independent external reviewer (from outside the Research Sub-committee) is usually sought. There is also review by Research Sub-committee members of interim, annual and final reports by award holders. All of these schemes are advertised on the Society website together with application forms and guidelines with deadline timetables.

Finally, as Chair, I would like to thank all of the members of the Research Sub-committee who have contributed to the work of the Sub-committee during the 2011/2012 year, including Nick West (Trainee Rep), Frank Carey, Phil Quirke, Richard Byers, Adrienne Flanagan, Jo Martin, Simon Herrington (General Secretary), Latch Ilyas (Research Sub-committee Chair Elect) and Andrew Wyllie (President), as well as the administrative support that we receive from Julie Johnstone and Ros Pitts. This is my final year as Chair of the Research Sub-committee, which I have enjoyed very much, and I will hand over to Latch Ilyas in July 2012. Special thanks to Andrew Wyllie and Frank Carey, who also step down from this Sub-committee in July 2012.

Mark Arends, June 2012

AGENDA ITEM NO. 9.3 REPORT OF THE TRAINEES' SUB-COMMITTEE

Overview

Our previous chair, Dr Ian Proctor, stepped down in July 2011 along with three other members of the Sub-committee, and we were pleased to welcome five new members. The Sub-committee membership currently has a good geographical spread with representatives from Leeds, London, Cambridge, Newcastle, Glasgow and Dublin. We provide representation on the Society main committee and all Sub-committees. Concessionary membership of the Society continues to be healthy, reflecting the large number of benefits available for only £10 per year. An electronic survey of trainee members is currently underway to identify ways in which we can maximise the conversion of trainee members to ordinary membership at the end of training.

Meetings

The sub-committee continues to organise trainee sessions at the biannual scientific meetings. During the London winter Meeting we had a session on head and neck pathology and for the Sheffield summer Meeting there will be sessions on cardiac pathology, soft tissue tumours and how to be a consultant. Sessions for the upcoming Ghent and Edinburgh meetings are currently being finalised. The trainee sessions are designed to stimulate trainee attendance at the scientific meetings by focusing on topics relevant to clinical and academic practice. We have also attempted to increase trainee participation in the slide seminar competitions by making the slides available before the meeting on the Society website.

Research

The Sub-committee continues to encourage the trainee membership to actively engage in research and we actively promote the relevant funding opportunities wherever possible. We particularly strongly support the small grants scheme, Jean Shanks PhD Fellowship and Career Development Fellowship, which fund trainee research at all levels.

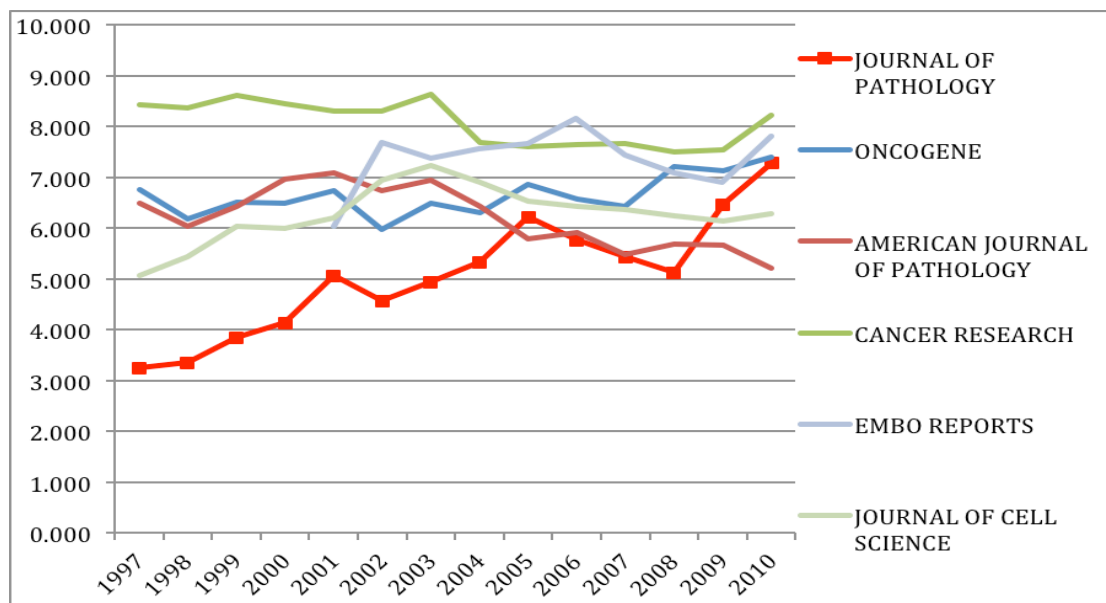
Website

A number of academic and clinical educational resources for trainees are available on the Society website. These include the 'case of the month' section, where a new interesting case is added by the sub-committee members each month, the Debbie Hopster slide collection and slides from previous meetings. The educational portal is currently being audited by the Education & Training Sub-committee to improve quality of the content.

Nick West, June 2012

AGENDA ITEM NO. 10 - REPORT OF THE EDITOR IN CHIEF, JOURNAL OF PATHOLOGY
REPORT OF THE EDITOR IN CHIEF, JOURNAL OF PATHOLOGY

Because the summer meeting in 2011 was held in May, last year's ABM preceded the publication of the 2010 Impact Factor. When it was released in early July, at **7.274** it surpassed all prior achievements and it was the highlight of many great events in the last 12 months. The figure of 7.274 placed us well above the competition, and in particular the *American Journal of Pathology*, and also placed us into the territory of many high quality specialist journals.



At the time of preparing this report (late May 2012) the new IF for 2011 has not been released but we anticipate that we will at least maintain our excellent rank position although the vagaries of impact factor calculation may mean we fall below 7. *What is important is the long-term trajectory of our performance and that can be seen from the chart to be progressively in the right direction.*

Journal Strategy Day

Following on from the impact factor success and because both the Editor in Chief (Peter Hall, Riyadh) and Deputy Editor (Richard Poulosom, London) were about to enter the last year of their five-year terms a Strategy Day was held in early October 2011. This focussed meeting had representatives of the publishers and the Society as well as senior members of the Editorial team. It allowed a review of performance and a refocusing of efforts. Following this in depth review, changes to the Editorial team structure occurred (below) and developments and personnel changes on the Publishers side occurred. The resultant changes bedded in during early 2012 and the current team is working effectively.

Editorial team

As a result of the strategy day we modified slightly the Editorial team. There are now two 'teams'. The senior team of Editor in Chief, Deputy Editor and (currently) one Senior Editor (Philip Coates, Dundee) are involved in oversight and strategic decisions. A second Senior Editor will be appointed in due course.

The Associate Editor team has 7 members and is responsible for the day to day handling of manuscripts. In due course this will become a team of 6 with an additional Senior Editor. We also in 2011 appointed Adrian Jubb (San Francisco) as Social Media Editor (see below). There are fixed terms for all team members and last December Gerald Niedobitek (Berlin) stood down after excellent service. He was replaced by Jorge Reis-Filho (London). At the end of this year Marc Ladanyi (New York) and Louise Jones (London) demit office as Associate Editors after excellent service. In addition to his skills in molecular pathology Marc made a huge contribution in helping develop our North

American presence. Louise made major contributions to our editorial coverage of breast cancer. We have recently appointed Nathalie Wong (Hong Kong) and David Huntsman (Vancouver) continuing our North American presence and extending our reach into Asia. The other current AEs are Hartmut Koeppen (San Francisco), Eric White (Michigan), Ming Du (Cambridge) and David Bonthron (Leeds). Finally the Society and Publishers have asked the current Editor in Chief and Deputy to serve further terms in these roles from January 2013.

Submissions, acceptances and the review process

We continue to attract large amounts of excellent copy and have an increasing reputation in the scientific publishing arena. We have seen pleasing increase in high quality submissions from North America including some leading and high profile groups. Submissions from Asia also continue to increase and many are of high quality. We anticipate that these trends will continue and strive hard to innovate and bring value to readers and the Society members.

Submissions to the journal have surged and average 90 per month, a trend that has persisted over the last year. We have introduced an effective triage system to deal with this influx. This is based on three or more of the Editorial team (always including the Editor in Chief or Deputy Editor) considering all submissions and coming to a judgement of suitability within a few days of submission. By this means we can then send only the best manuscripts into the review process. This aids us in driving up quality and limiting the workload for Associate Editors and reviewers. Those manuscripts deemed to not be a suitable fit for the Journal or seen to be unlikely to be competitive in the review process are returned to authors.

Currently ~70% of manuscripts are returned to authors after triage and without external peer review. Overall our acceptance rate averages 17%. The mean time to first decision is just 9 days and to final decision averages 18 days. In addition we rapidly publish accepted material within 7 days of acceptance (as a PDF of an edited manuscript) and a few weeks later as a fully proofed PDF, both of which have a constant DOI (Digital Object Identifier) that allows work to be cited immediately and accurately. We continue to be market leaders in pathology (and other areas) in these parameters - few Journals come close to our turnaround times! We are also highly competitive in having no submission or page charges, no fees for online supporting material, and very competitively priced colour charges.

Free material, Open Access and Web presence

Every month we make one or two articles available free to all as part of our endeavours to enhance the usage and exposure of the Journal to all interested parties. In addition we have a well-established system (OnlineOpen) for Open Access publication for any author who desires this option, and automated Open Access and PMC deposit services for NIH and HHMI funded authors. [NB. Wellcome, MRC, CR-UK and NIH funded work should normally use the OnlineOpen route].

Next generation sequencing: Call for papers

There is a widely held view that NGS will be an important and potentially disruptive technology for pathology. Certainly NGS based studies have already cast new light in many disease processes. We have already published a number of important papers in this area and we have opened a specific call for papers in this area. We will endeavour to fast track submissions in this competitive field and ensure papers are available freely for 6 months from publication.

Marketing and promotion of the Journal

Sharon Mathelus, based in the Wiley-Blackwell Boston Office, has made great strides in developing our marketing strategy. In support of this the Editorial team act as advocates promoting the Journal at many International meetings. We have been especially keen to develop our North American presence and are also beginning to develop a presence in Asia. Some of this is coupled with Histopathology, a particularly pleasing synergistic interaction

Virtual Issues

One of last years' initiatives was the production of thematically based virtual issues (VIs) providing an annotated compilation of material we have published in a particular area. This is supplemented by questions that can form the basis of reflective study for CPD. We publish 4 a year and link wherever possible their release to major international meetings and/or meetings of the Society, thus maximising impact. So far we have published ten such Vis

2010

p53
Breast pathology
Renal pathology
Haematopathology

2011

Neuropathology
miRNAs
Sarcoma pathology
Hypoxia & angiogenesis

2012

Gynaecological pathology
Stem cells & clonality
Molecular pathology & NGS (planned).

Future VIs will collect material together in a range of topical areas and we hope will prove valuable resources for Society members and others. We continue to provide CPD questions in relation to the papers cited in the VI. These papers are freely available for 6 months from the time of publication of the VI.

Annual Review Issues

The 2012 ARI was Guest Edited by Nick Wright and Richard Poulson on the topic of *"The Cell Biology of Disease"*. They collected together an impressive array of high profile authors and the ARI is freely available on line. Plans for the 2013 ARI are in hand. It is being edited by Eric White (Michigan) and Alberto Mantovani (Milan) with the working title of *"The Pathology of Inflammation, Healing and Repair"*. Again a stellar cast of authors has been assembled and we anticipate publication on time in January 2013 (see Appendix E).

Podcasts and social media

Last year we began preparing short podcasts of topics in relation to the Journals papers and activities. We continue this and hope they prove of interest, although I should say my children do not seem impressed with me being available on iTunes!

We appointed Adrian Jubb (San Francisco) as Social Media Editor with a remit of developing our presence on Facebook and related media such as LinkedIn. He has worked hard to develop this and we watch with interest as to its long term value and utility.

Conclusion

In conclusion it has been a very good year for The Journal of Pathology - and we are all working to move it forwards....

I wish to acknowledge the hard work and effort of key staff from the Publishers.

- Paul Cumine our managing editor (taking over from Gavin Sharrock who this year moved upwards in Wiley-Blackwell), and assisted by Ellie Galloway.
- Sharon Mathelus is ably developing and promoting our Journal as its Marketing manager.
- Nicky Cotterill who ensures our first point of contact for authors through the ScholarOne Manuscripts manuscript submission system goes as smoothly as possible.
- Paul Martin who makes the final product looks as good as it does.

The Editorial team are a fantastic and hard working group and I should also acknowledge the Officers of the Society, who continue to provide unwavering support and wise council.

Peter Hall, *Editor in Chief*, June 2012

Review of 'The way forward' 2004

Noted:

1. The majority of the objectives of the 2004 meeting have been achieved.
2. There is a need to emphasise academic pathology and the public benefit of the study of disease mechanisms/processes, not just disease.
3. Leadership in pathology is essential, particularly to influence training.

Agreed:

1. Minor changes to the mission statement are required to address the points above.

The big picture

Noted:

1. Society finances are healthy and assets are significant.
2. Spend should be determined by strategy.
3. Funding of schemes to promote and support academic pathology is particularly important.
4. Need to consider benefits for non-members (charitable spend).
5. The governance structure is working well. Some changes have been made since it was introduced in 2004 – the current structure is given in appendix B.
6. Academic input to the Society is under pressure. Succession planning is key. Support from the office is vital.
 - a. A number of possible solutions were discussed, including consideration of a part-time strategically orientated individual, either a chief executive or a senior academic akin to College President who can commit the time (remunerated).
 - b. However, some cautioned against introduction of a CEO as such an individual would not necessarily reflect the needs of the academic pathology community
7. Should there be a representative of the Royal College of Pathologists on the Society committee *ex officio*?
8. The development of Society ambassadors is important.

Agreed:

1. Revised funding schemes and member benefits, as given below, should be introduced.
2. Explore specific areas where the office could have greater input e.g. website.
3. A job description should be developed for Society ambassadors (draft included in appendix B).

Core business 1

Membership

Noted:

1. Total membership is growing.
2. This has been largely due to the introduction of concessionary membership but there is now evidence that ordinary member numbers are rising (see appendix B).
3. This growth needs to be sustained but the benefits of Society membership for ordinary members are not as clear as those for concessionary members.
4. There is also a need to promote existing benefits e.g. book discounts more actively.

Agreed:

1. The following potential benefits of membership should be explored

- a. p53 book with Dundee University Press
 - b. 'How to write a paper' etc from Wiley-Blackwell
 - c. Possible new edition of Paul Tadrous' book
2. Further ideas for benefits are required.

Communication

Noted:

1. The website is functional but requires re-evaluation.
2. PathXL (formerly iPATH) support the educational portal well but their contribution to maintenance and development of the site has been less than ideal.
3. Video lectures have not been viewed frequently and are not good value for money.
4. The public lectures are important, although it is recognised that providing these on the web has not been effective.

Agreed:

1. To continue maintenance and support from PathXL for 1 year but to develop alternatives, in particular the possibility of managing the website in-house or employing someone with the necessary skills.
2. Public lecturers should be asked to provide a short piece for YouTube / iTunes, which would act as a taster, with the full version freely available on the website.
3. Public lectures should be videoed by the local team where possible rather than incurring the expense of PathXL.
4. Videoing other lectures should be discontinued.
5. Short versions of conversations for YouTube should be explored.
6. Involvement of patient organisations should be considered, for example by introducing (or broadening) a scheme to allow applications from the public e.g. teachers.

Meetings

Agreed:

1. The concept of a main scientific meeting (Summer) and a smaller predominantly educational meeting (Winter) was supported.
2. The predominantly educational meeting should retain a scientific component.
3. There should be a greater link between the Winter meeting and the Journal of Pathology Annual Review Issue.
4. The trial of fixed venues was supported.
5. Stand-alone educational days should be discontinued.
6. Summer schools should be re-badged as Journal of Pathology research training schools.
7. The Winter school is very popular and should be continued

Core business 2

Research

Agreed:

1. The research budget should be allocated to the sub-committee as a total, rather than being prescriptive about individual schemes.
2. There was a strong view that research quality should be determined first and funds apportioned accordingly.
3. There is however a need to ensure that the spread across different schemes is appropriate (indicative budgets?).
4. If quality applications exceed the available budget, increased funding should be considered i.e. strategy driving expenditure.

5. The reporting of research activity should be improved by ensuring that reports are submitted in a timely fashion.
6. Reports from all recipients should be published on the website.

Review of Schemes

1. The career development fellowship is an excellent development. This has only recently been introduced and should be continued for 3 years and then reviewed.
2. The research training fellowship (PhD) in collaboration with the Jean Shanks foundation is a positive development but more partner organisations are needed e.g. MRC, Wellcome Trust etc.
3. The Sino-European and Japanese-European awards should be retained and extended to include an international award of the same type but without geographical restriction.
4. The small grants (previously pilot grants) have been very successful. Funds should be increased where necessary from a more flexible budget.

Education

1. An audit of the undergraduate schemes is required.
2. The Winter and Summer schools should be modified as detailed under research.
3. The Summer school should have a rolling structure and include the molecular pathology module from RCPATH curriculum.

General Issues

The Open Scheme

1. The public engagement scheme has already been removed from the open scheme.
2. The open scheme should be retained but specific schemes that provide support for meetings and the purchase of equipment should be developed.

Mouse pathology

1. There is strong support for the development of animal pathology in the context of the study of human disease.
2. This should be considered separately and specifically after the Hinxton meeting.

Communication

There is a need for better communication between the research and education sub-committees.

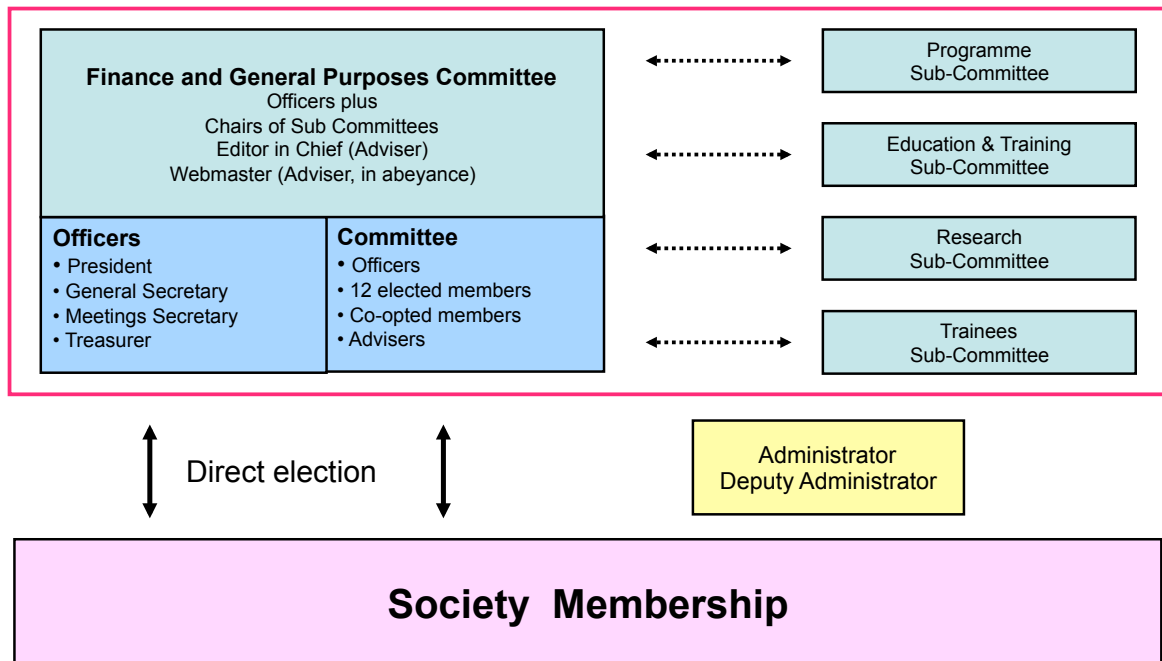
Journal of Pathology

Noted:

1. The Journal is performing extremely well with an excellent upward trajectory in impact factor.
2. The editorial team functions extremely well.
3. There are a number of current issues
 - a. succession planning
 - b. workload
 - c. threats to income
 - d. move to online only
4. The Journal's strategy was the subject of a separate awayday.
5. The sustained increase in submissions raises the option of developing a second, perhaps open access, journal. This requires further discussion by the officers and committee.

Appendix B

Governance Structure



Appendix B

Ambassadors for the Pathological Society (based on a paper by Peter Hall)

USCAP employ ambassadors to promote its functions. Its website states

“Ambassadors are individuals selected from each of the 160 plus medical school Departments of Pathology to represent the Academy and aid in acquainting their house staff and fellows with the benefits and educational opportunities of the USCAP”.

We have agreed that a similar strategy should be employed by the Pathological Society.

The roles of the ambassadors would be as follows:

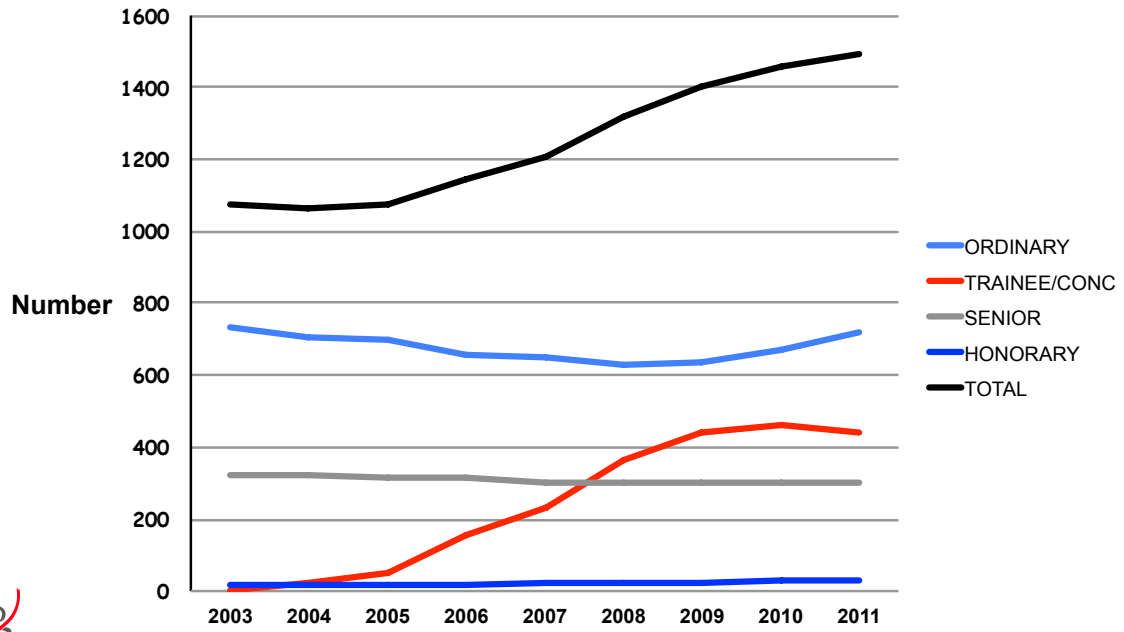
1. promoting the Societies interests
2. acting a an advocate for the Society
3. encouraging colleagues (medical and non medical) to join the Society
4. being a source of information about the Society for staff (and in particular new staff and trainees),
5. being a contact point for the Society who can be used to disseminate information to Members and to solicit views from members.

Ambassadors could be Officers and Committee members or may be identified on an *ad hoc* basis to represent their ‘constituency’. Ambassadors would be identified on the website in relation to their constituency. The benefits to the Society of this are clear, and Ambassadors would benefit by having the position (it should be of fixed tenure), having a listing published on the website and also in the Programme of Society Meetings. The position would be of fixed duration and unpaid.

With regard to the geographic units one might envisage that there would be Ambassadors in each major hospital or Academic Unit; in large cities there may be more than one. There might be Ambassadors in other Countries. For example the Dutch and Irish Committee representatives would take on this role for Ireland and the Netherlands. Opportunistically other countries might have Ambassadors appointed from Society members who happen to reside there and who are prepared to promote the Societies interests.

Appendix B

Membership



Total number of feedback forms received: 62
--

A. Programme Evaluation

	Strongly Agree	Agree	Disagree	Strongly disagree
The Title of the meeting interested me	17	28		
The meeting was relevant to my Continuing Professional needs	19	26		
The meeting contained new ideas and material	17	26	1	
Adequate time was given for discussion	11	33	1	
The meeting met my expectations	13	30	1	
The facilities, catering arrangements met my requirements	9	34	2	
The AV facilities were of a high quality	11	34		

I would like to see meetings held in:

London	N.England	Scotland	Wales	N. Ireland
15	11	9	10	4

Eire x1; 1x Belgium/Netherlands

How did you hear about this meeting:

M'ship Communication	Newsletter	Website	Colleague	Other
19	2	11	15	3 x ACEM Communication

Ghent Pathology
10 -13 May

1. Symposium: Advances in Gynaecological Pathology

		1	2	3	4	5	Total	Mean Average
a	Prof PH Delvenne		2	7	18	3	30	3.73
b	Prof WG McCluggage			4	15	12	31	4.26
c	Prof E Marbaix		4	7	17	1	29	3.24
d	Prof CS Herrington			1	14	12	27	4.41
e	Prof M Wells			1	16	11	28	4.36

2. Satellite Symposium: Targetted Therapies: An Update in the Her1 and Her2 Stories

		1	2	3	4	5	Total	Mean Average
a	Dr K Lambein		2	7	15	4	28	3.75
b	Prof V Bossuyt		2	4	16	6	28	3.93
c	Dr E de Azambuja		3	9	17	3	32	3.63
d	Prof A Hoorens			7	12	4	23	3.87
e	Prof P Pauwles			7	11	5	23	3.91

Additional Comments

1. Stimulating and very promising
2. The sound was poor in the room used for the Satellite symposium
3. The Satellite Symposium should have been in the Reffer room as the room used was overcrowded
4. Good educational content
5. The Gynae symposium was excellant! The lecture on Dendritic cells in cervical cancer was enlightening
6. Excellent Gynae session
7. Discussion of the Satellite symposium was hampered by the poor acoustics in the room

Ghent Pathology
10 -13 May

1. Symposium: The Pathologist as Part of the Puzzle in Diagnosing Inflammatory Disorders

	1	2	3	4	5	Total	Mean Average
a Prof A Nicholson		1	5	17	15	38	4.21
b Dr AC Bateman			8	18	12	38	4.11
c Prof C Sempoux		1	6	22	9	38	4.03
d Prof K Sheahan		1	8	19	11	39	4.03
e Prof Em K Geboes		1	4	18	17	40	4.23

2. Keynote Lecture: Mechanisms Regulating Combined Gut and Joint Inflammation in Spondyloarthritis

	1	2	3	4	5	Total	Mean Average
Prof D Elewaut		1	10	19	10	40	3.95

3. Meet the Experts - Trainees Session: Diagnostic Dilemmas in Thyroid Pathology

	1	2	3	4	5	Total	Mean Average
a Prof I Salmon			4	10	6	20	4.10

4. Symposium: Lung Pathology Updated

	1	2	3	4	5	Total	Mean Average
a Prof AG Nicholson			6	21	16	43	4.23
b Prof Dr W Timens			10	27	6	43	3.91
c Dr E Thunnissen		2	11	19	5	37	3.73
d Prof S Lantuejoul			5	22	6	33	4.03

5. Public Lecture: Old and New Challenges in Global Health

	1	2	3	4	5	Total	Mean Average
Prof P Piot			5	12	10	27	4.19

Additional Comments

1. I attended the oral presentations between 9am-11am on Wednesday, the overall educational content of the course was good. I found the session by Prof Geboes excellent.
2. Satisfactory
3. Perhaps a bit too much overlap/repetition between parts of 1 & 3 above and between Satellite Symposium on Tuesday and 4 above
4. Prof S Lantuejoul's talk was outstanding - well constructed and presented. Prof Nicholson's talk was good

Ghent Pathology
10 -13 May

5. It is not a good idea to have parallel GE presentations. I cannot split myself to attend the symposium and the oral communications, which are both interesting and important for me as a GE pathologist
6. The room where the thyroid session was given was too small and very crowded.
7. Thyroid session room was too small (or too much interest in the audience?) so that you could not attend this session in an acceptable way - not enough chairs
8. Poster sessions and oral presentations on research topics excellent.
9. 4b nothing new

1. Symposium: Clinicopathological and Molecular Advances in Benign and Malignant Liver Tumours

	1	2	3	4	5	Total	Mean Average
a Prof H Van Vierberghe		2	9	22	7	40	3.85
b Dr L Libbrecht		3	10	22	5	40	3.73
c Dr A Quaglia		1	9	22	8	40	3.93
d Prof J Zucman-Rossi			7	25	12	44	4.11
e Dr S Thorgeirsson		1	11	26	6	44	3.84

2. CL Oakley Lecture: Predicting Benefit from Anti-Angiogenic Therapies

	1	2	3	4	5	Total	Mean Average
Dr A Jubb		1	8	19	10	38	4

3. Meet the Experts - Trainees Session: Preneoplastic Lesions of the Breast

	1	2	3	4	5	Total	Mean Average
a Prof A Pinder			2	8	7	17	4.29

4. Doniach Lecture: Colorectal Cancer: from Dukes to Genes

	1	2	3	4	5	Total	Mean Average
a Prof F Bosman			3	20	9	32	4.19

Additional Comments

- ad 2 - Why were there no questions after the talk? Would have accentuated the impact of data (also the up to now 'negative' results)
- Lecture by Dr A Jubb very informative
- Very educative and up to date
- Dr S Thorgeirsson's talk was good but unfortunately was rushed towards the end
- Liver tumour discussion was excellent and genomic insight was eye opener
- Excellent presentations
- Hepatologist had a negative view of pathology!
- The liver lectures seemed to repeat the same content. The first lecture was interesting as from a clinician viewpoint. The lecture by J Zucman-Rossi was good and presented the new mutations and system of classifying adenoma concisely and easy to follow despite being a complicated subject
- Dr A Jubb is a very good speaker

1. Trainees Symposium: Urological Neoplasia

	1	2	3	4	5	Total	Mean Average
a Dr DM Berney				3	4	7	4.60
b Dr GJL Van Leenders			1	5	4	10	4.30
c Dr ISD Roberts			1	2	4	7	4.43
d Prof E Lerut			2	3	1	6	3.83

2. Symposium: Recent Evolutions in Endocrine Pathology

	1	2	3	4	5	Total	Mean Average
a Prof Sir ED Williams				12	14	26	4.53
b Prof AM McNicol			1	18	5	24	4.17
c Dr FH van Nederveen				15	15	30	4.00
d Prof G Kloppel			1	12	17	30	4.53
e Dr CS Verbeke			2	17	9	28	4.25

3. Slide Seminar Competition Discussion Session: Tumours of the Skeleton: Test your Knowledge up to the Bare Bone

	1	2	3	4	5	Total	Mean Average
a Dr R Forsyth				5		5	4.00
b Prof PCW Hogenboorn				4		4	4.00

4. Slide Seminar: Soft Tissue Tumours

	1	2	3	4	5	Total	Mean Average
a Prof R Sciot				4	1	5	4.20
b Prof NA Ahtansasou				3	1	4	4.25
c Dr R Forsyth				3	1	4	4.25
d Prof PCW Hogendoorn				5		5	4.00
e Dr P Dei Tos				4		4	4.00

5. Cunningham Lecture: The Terminal Ileum, Follicle Associated Epithelium and M Cells: How they Manage to Keep our Gut

	1	2	3	4	5	Total	Mean Average
a Prof CA Cuvelier				15	11	26	4.42

Additional Comments

- Noise from building work prevented from hearing oral presentation on Wednesday morning
- It was very difficult getting accommodation
- In summary this was one of the most educative meetings I have attended
- AV was sufficient in Rector room however in Rector Vermeylen the AV was suboptimal in terms of layout and sound
- Beautiful venue, good programme. Poster area was a bit tight - it was impossible to move through during the poster sessions.

Ghent Pathology
10-13 May

Compact venue was good for the exhibitors. Congratulations and thanks to the organisers

6. Both Prof Williams and Prof McNichol's talks were outstanding as was Prof Kloppel's but Dr's van Nederveen and Dr Verbeke's were also a highlight on the last day,

7. Prof Cuvelier's talk was outstanding and his organisation of this meeting has been brilliant. I too have now learnt something about M cells

8. An excellent meeting - well organised and a good and varied programme. A brilliant and interesting venue with all meeting places and hotels in easy walking access. The organiser Prof Cuvelier and the education/organising committee should be congratulated.

9. Excellent 4 days. Well organised.

10. This was an excellent meeting. You should encourage more participation from IAP members from other areas, USCAP, Australian/Asian etc

11. I expected to get lunch or at least a snack on arrival on Tuesday. I was sorry to have to leave right away to get lunch. I was sorry to miss the organ recital on Thursday thought the tour by the Augustine monk was a good 'on the spot' solution

12. Great programme

13. Very good conference. Good surroundings, interesting programme. I found that the talks outside my own areas of special interest were also very interesting. The symposium on inflammation was particularly good. Very well chosen topics.

14. Average lunches

15. Poster area too dark, no room for moving about, stickers were a nightmare to remove making tears in the poster

16. Poster area was very cramped

17. The meeting venue location was great

1. Association of Clinical Electron Microscopists - 14th Annual Scientific Meeting

	1	2	3	4	5	Total	Mean Average
a Mr G Anderson				7	4	11	4.36
b Dr L Moran				5	5	10	4.50
c Dr I Hausser			4	2	5	11	4.09
d Mr C Van Ruhland		1	3	2	3	9	3.77
e Prof D Ferguson			1	4	6	11	4.45
f Dr J Holton				2	7	9	4.78
g Prof J Nesland		1	2	2	4	9	4.00

Additional Comments

1. Very informative in other specialised areas of EM. Fitting things into place for other conditions than the ones that one is confident with
2. Invaluable was the presentation of non-EM supporting work with many of the presentations of diagnostic EM. The lecture on elastic was useful in that it described the appearance of fibres in skin etc which I am no so familiar with. An analysis of glomerular basement membrane from various laboratories was very
3. Informative talks on a broad base of subjects. Very enjoyable.

Appendix D

Winter Meeting 2012
5-6 January
Guoman Tower Hotel, London

Total number of feedback forms received: 60

A. Programme Evaluation

	Strongly Agree	Agree	Disagree	Strongly disagree
The Title of the meeting interested me	22	31	3	1
The meeting was relevant to my Continuing Professional needs	22	31		1
The meeting contained new ideas and material	27	29		1
Adequate time was given for discussion	20	33	2	1
The meeting met my expectations	21	33	2	1
The facilities, catering arrangements met my requirements	23	32	2	1
The AV facilities were of a high quality	18	37	3	

I would like to see meetings held in:

London	N.England	Scotland	Wales	N. Ireland
35	12	8	2	2

Southwest x 1; lx Midlands: 1x Dubai, Nice &

How did you hear about this meeting:

M'ship Communication	Newsletter	Website	Colleague	Other
39		15	11	Previous Meeting

Winter Meeting 2012
5-6 January
Guoman Tower Hotel, London

1. Symposium: Genomic Pathology - 1

		1	2	3	4	5	Total	Mean Average
a	Prof DP Kelsell		2	8	25	18	53	4.11
b	Prof M Caulfield		1	5	24	26	56	4.34
c	Prof J Cuzick	1		3	25	25	54	4.35
d	Prof JL Jones	1	1	15	27	13	57	3.88
e	Dr DM Berney	1		7	25	24	57	4.25

2. Goudie Lecture: Harnessing Genetic Dependencies in Cancer Therapy

		1	2	3	4	5	Total	Mean Average
a	Prof A Ashworth	1		2	16	29	48	4.50

1. Symposium session was informative and standard of presentations high
2. Goudie lecture was a rather late in the day - difficult to get the most out of it due to tiredness
3. Very good meeting - very soon after Christmas/New Year
4. Prof Ashworth lecture was very informative
5. Difficulty in viewing powerpoint presentations due to use of seminar room with a level floor. Otherwise good venue and facilities
6. The symposium sought to tie molecular genetics to pathology and clinical manifestations of disease in selected topics. To a variable extent it succeeded and the educational content was generally very good. Precise, focus and time keeping could have been better
7. Very high quality lectures, with up to date knowledge and highly organised content of almost all lectures
8. Excellent
9. Great location - high quality meeting. Loved the slides
10. Good venue. Good food. Very poor internet
11. As an ST1 trainee in histopathology this was my first PathSoc meeting I was impressed by the depth of advances in the molecular and genetic branches of this speciality. The meeting synthesises the new paths and ideas and gave me valuable opportunity to observe innovative trends in telepathology and specimen reporting. Looking forward to next one
12. Excellent scientific quality
13. Excellent particularly Prof Ashworth
14. Speakers overran, Session ended half an hour late and the opportunity for discussion was compromised. Speakers need to keep to time
15. Good meeting - many thanks
16. Extra seating for eating would be really good next time please. Another excellent winter meeting - thank you

1. Symposium: Genomic Pathology - 2

	1	2	3	4	5	Total	Mean Average
a Dr LA Metherell			12	19	8	39	3.9
b Prof S Marino			3	20	16	39	4.33
c Prof AR Silver		1	12	15	12	40	3.95

2. Symposium: Advances in Protein and Nucleic Acid Technology

	1	2	3	4	5	Total	Mean Average
a Prof RW Pickersgill	1		7	17	15	40	4.13
b Prof GI Murray	1	1	10	14	13	39	3.95
c Dr R Tonge	1	1	9	16	10	37	3.89

3. Meet the Experts - Trainees Session: The Exam: Head & Neck Pathology

	1	2	3	4	5	Total	Mean Average
a Dr K Shah	1		2	6	14	23	4.39

4. Slide Seminar Discussion Session: The Skin and Systemic Disease

	1	2	3	4	5	Total	Mean Average
a Prof R Cerio		2	3	13	15	33	4.24

5. Keynote Lecture: Phenotype-Genotype Correlations in the Evolution of Pre-invasive Disease in Epithelia

	1	2	3	4	5	Total	Mean Average
a Prof Sir N Wright		1		7	27	35	4.71

1. Excellent presentations and speakers. I would probably suggest a more systematic presentation for Dr Shah and more skin tumors related to systemic disease would also be good

2. Prof Sir Wright gave a very useful and interesting presentation

3. Prof pickersgill's talk was very interesting but he had to flick very fast through slides which was very disorientating, He obviously had not timed his talk to 30 minutes

4. The educational content of the symposium was wide ranging although relatively superficial. Time keeping could have been better. The head and neck pathology session was very well done as was the slide seminar discussion.

5. The use of a large room rather than a traditional lecture theatre was not a good call. It was not possible to see the bottom one-third of the screen

6. Excellent event. I hope never to miss subsequent meetings and programmes

7. My very first attendance at the Path Society meeting. It was in excellent meeting

Appendix E

2013 Annual Review Issue, *The Pathology of Inflammation, Repair and Fibrosis*

Guest Editors Eric White and Alberto Mantovani

- 1) Ted J. Standiford (University of Michigan) – Danger Associated Molecular Patterns (DAMPs) in Acute Lung Injury
- 2) Alberto Mantovani (University of Milan) – Macrophage polarization and tissue remodeling
- 3) Gerry Graham (University of Glasgow) and Massimo Locati (University of Milan) – Chemokine decoy receptors in injury resolution and healing
- 4) Alain Beschin and Jo Van Ginderachter (University of Brussels) – Inflammation and fibrosis in parasitic infections
- 5) Amiram Ariel (University of Haifa) – Endogenous anti-inflammatory mechanisms in wound healing and fibrosis
- 6) Derek Gilroy (University College London) – Mechanisms of inflammation resolution
- 7) Michal Schwartz (Weizmann Institute, Rehovot) – Stem cell renewal following retinal injury
- 8) Carol Artlett (Drexel University) – Inflammasomes in wound healing and fibrosis
- 9) David Ansley (University of British Columbia) – Oxidative stress as a mediator of myocardial injury
- 10) Jeremy Duffield (University of Washington) – Wnt signaling in renal injury and repair
- 11) Mahmood Khan (Ohio State University) – Stem cell transplantation as a therapy for tissue fibrosis
- 12) Gary Huffnagle (University of Michigan) – The role of the microbiome in tissue inflammation and fibrosis
- 13) Neta Erez (Tel Aviv University) – Tumor-associated fibroblasts in cancer-related inflammation
- 14) Mauricio Rojas (University of Pittsburgh) – Aging in wound healing and fibrosis
- 15) John Varga (Northwestern University) – Egr-1 transcription factors in systemic sclerosis
- 16) Anna Giammarioli (Istituto Superiore di Sanita, Rome) – Fibroblast autophagy in fibrotic disorders
- 17) Donald Fraser (Cardiff University) – miRNA regulation of TGF-beta and tissue fibrosis
- 18) Michael Zeisberg (Goettingen University Medical Center, Germany) – Promoter methylation in renal fibrosis
- 19) Ralph Schermuly (University of Giessen, Germany) – Dimethylarginine dimethylaminohydrolases in lung fibrosis
- 20) Boris Hinz (University of Toronto) and Eric White (University of Michigan) – Extracellular matrix and myofibroblast differentiation in tissue fibrosis